

Historic, Archive Document

Do not assume content reflects current scientific knowledge, policies, or practices.

ELLIOTT'S BULB OFFERS ~1930

From Now Until July 1st - Not Later

FARNCOMBE SANDERS:
THE MOST GORGEOUS OF TULIPS. INTENSE COLORING, BEAUTIFUL BLOOM. GIANT SIZE, EASY TO GROW. THESE PEDIGREED BULBS SELL FOR ABOUT 6 CENTS EACH. SEE PAGE 10.

NARCISSUS, EMPEROR: THE LARGEST AND FINEST TRUMPET FLOWERED NARCISSUS (DAFODIL). FRAGILELY BEAUTIFUL, YET RUGGEDLY HEALTHY. EASILY GROWN INDOORS OR OUTSIDE. BULBS COST ABOUT 20 CENTS EACH. SEE PAGE 27.

LIBRARY
RECEIVED
★ JUN 19 1930 ★
U. S. Department of Agriculture



NAMED TULIPS

Elliott's Hand Made Mixtures

Each Mixture Guaranteed to Contain 10 Distinct Varieties—All Named In This Catalog



DARWIN TULIPS

The USUAL method of preparing a mixture of anything is to take so many of this, so many of that and so many of the other, throw them in a pile, and mix them with a wooden shovel. A mixture so made is a perfectly honest mixture, but what an individual customer gets out of it is obviously the result of chance.

FOR ADVANCE ORDERS ONLY, we will prepare five hand-made mixtures. Our new bulb warehouse, the finest thing of its kind in the world, contains a thousand bins. Every day, as required, ten employees will count out five bulbs each from ten named stocks and dump the fifty bulbs into one bin, repeating the operation until all of the bins are filled. EACH BIN WILL CONTAIN FIFTY BULBS AND NO MORE. Consequently to every customer who orders fifty bulbs of one of these mixtures, WE GUARANTEE THAT HE WILL RECEIVE

TEN NAMED VARIETIES, five bulbs of each variety. We further guarantee that all the varieties used are offered in this catalog. We cannot afford, at this price, to pack the bulbs under separate names nor allow the customer to specify what varieties shall be included. The choice must be left entirely to us.

Customers wishing less than fifty bulbs will have their orders counted from one of these bins. EXCEPTING WHERE THE ORDER CALLS FOR BULBS IN MULTIPLES OF FIFTY, we cannot guarantee that they will be filled with equal quantities of the ten named varieties, but it is probable that they will be. To the best of our knowledge and belief no other bulb house in the world has the facilities to prepare mixtures as fine as these and it will probably be years before anyone else can attempt it.

These are the Mixtures

Elliott's Hand Made Mixture of DARWIN TULIPS

25 for \$ 1.50
50 for 2.85
100 for 5.50
500 for 25.00
1000 for 47.50

Each Mixture Guaranteed to Contain
10 Distinct Varieties
All Named in this Catalog

Elliott's Hand Made Mixture of COTTAGE TULIPS

25 for \$ 1.40
50 for 2.75
100 for 5.00
500 for 23.75
1000 for 45.00

Each Mixture Guaranteed to Contain
10 Distinct Varieties
All Named in this Catalog

Elliott's Hand Made Mixture of DOUBLE EARLY TULIPS

25 for \$ 1.65
50 for 3.10
100 for 6.00
500 for 28.75
1000 for 55.00

Each Mixture Guaranteed to Contain
10 Distinct Varieties
All Named in this Catalog

Elliott's Hand Made Mixture of BREEDER TULIPS

25 for \$ 1.50
50 for 2.85
100 for 5.50
500 for 25.00
1000 for 47.50

Each Mixture Guaranteed to Contain
10 Distinct Varieties
All Named in this Catalog

Elliott's Hand Made Mixture of SINGLE EARLY TULIPS

25 for \$ 1.50
50 for 2.85
100 for 5.50
500 for 26.25
1000 for 50.00

Each Mixture Guaranteed to Contain
10 Distinct Varieties
All Named in this Catalog

Elliott's Hand Made Mixture of CROCUS

50 for \$ 2.25
100 for 4.00
500 for 18.75
1000 for 35.00

Each Mixture Guaranteed to Contain
10 Distinct Varieties
All Named in this Catalog

ELLIOTT NURSERY COMPANY

505 Magee Building, Pittsburgh, Pa.

Every Offer in This Book Positively Closes July 1

EARLY in July our buyers sail for Holland to get the pick of the best bulb crops. To place your order after sailing date, is to buy too late; it would then be impossible to fill your order.

Your advantages under this method are many: Ours is the Biggest Bulb House in the World. We import on such a large scale that we can and do sell the world's finest, super-quality, named bulbs at prices lower than are charged for nameless, second rate ones.

As we deal with scientist-specialists in each variety, rather than with ordinary growers, you can be certain that every Elliott bulb is exactly as named and described, that every bulb is fresh and healthy, and that every bulb has reached its full maturity and is ready to produce its finest flowers.

As you go through this catalog, you will find a greater variety of bulbs than any retail store could possibly carry. But, better than this, you will find Elliott bulbs described with an accuracy of detail that is impossible to the average clerk. So, when you put an Elliott bulb into the ground, you know exactly what kind of a flower it will bring forth.

Remember Elliott's Super-Quality Bulbs cost less than nondescript ones, remember that we import to your order. Your bulbs will be selected and packed in Holland and will be shipped to you immediately upon their arrival in this country next fall, perfectly fresh, double-tested, and in the best possible condition.

But you must be prompt; your order must reach us by July 1.

ELLIOTT NURSERY CO., 505 Magee Bldg., Pittsburgh, Pa.
In Business 41 Years—The Biggest Bulb House in the World

Order Now

Pay Next Fall

The Elliott Money-Back Bond protects you to the limit. October is planting time. We make no deliveries until the bulbs should go into the ground, so we do not require payment until delivery time.



America's Finest Outdoor Tulip Show A Garden of 50,000 Flowers

WOULD you like to see the finest Tulip Show that has ever been produced in this country? Then visit the magnificent outdoor exhibit at our Evans City, Pa., nursery this spring.

You will see Fifty Thousand blooming Tulips, all the late flowering sorts—Darwins, Breeders, Hybrids, and so on, all grown from Elliott's Bonded Bulbs, all listed in this book and every variety available for your own garden.

Then, you will see new rare and scarce tulips; varieties so rare that they have never before been shown in this country; flowers so valuable that we are under contract to return the bulbs to Holland.

The background to this massed and glorious beauty consists of three acres of loveliness, planted with all the skill and knowledge we possess.

If you live in the Pittsburgh district, or if you plan to be in this vicinity, come to this show. You will enjoy a visit to the extensive gardens that comprise our nursery. You will be happy every minute you spend amid the restful beauty of our hill-surrounded, cultivated plateau.

Because weather conditions govern growing, the time cannot be determined now. Write us; we will let you know the dates later. There is, of course, no charge of any kind.

IT is a rapidly growing practise to avoid color clashes in the garden. Flower lovers now seek the more satisfying effect of related colors and shades. On this page we offer four combinations of Tulips that will give you a gay *Harmony in Contrast*. Please be sure to order your group or groups by number, and please remember that we cannot make any changes or substitutions. Each combination must be ordered as arranged.

Harmony in Contrast

BRONZE ~ LAVENDER ~ PINK

For Late May Blooming

Group No. 1 (Order by number)
Darwin and Breeder Tulips

- Gretchen** . . . Delicate Flesh Color; Large Globular Flower
Valentine The Finest Soft Heliotrope
Massachusetts Light Pink; Large Flower
Copernicus . . . Finest Light Brown and Rose. Unusually attractive
Bronze Queen Soft Buff, inside tinged Golden Brown
Prince Albert . . . Golden Brown with Purple Flush; Green Base. Large flowers. The Finest of its color

Group 1	} 60 Bulbs (10 ea. color)	Reg. Pr. \$5.40	Special Pr. \$4.50
Group 1A	} 90 Bulbs (15 ea. color)	Reg. Pr. \$8.10	Special Pr. \$6.75
Group 1B	} 150 Bulbs (25 ea. color)	Reg. Pr. \$13.50	Special Pr. \$11.00

YELLOW ~ VIOLET ORANGE and RED

For April Blooming

Group No. 3 (Order by number)
Single Early Tulips

- Primrose Queen** Soft Primrose (pale greenish yellow)
Van der Neer Rich Deep Violet. Very large open flower beautifully formed
Max Havelaar Blood Orange, Flushed Salmon Rose
Prince of Austria Orange Shaded Scarlet; Scented
Belle Alliance Glowing Crimson Scarlet; very fine
Vermillion Brilliant Dazzling Scarlet; very striking

Group 3	} 60 Bulbs (10 each color)	Reg. Price \$5.15	Special Price \$4.45
Group 3A	} 90 Bulbs (15 each color)	Reg. Price \$7.75	Special Price \$6.80
Group 3B	} 150 Bulbs (25 each color)	Reg. Price \$12.90	Special Price \$10.75

YELLOW ~ PINK and RED

For April Blooming

Group No. 4 (Order by number)
Double Early Tulips

- Imperator Rubrum** . . . Brilliant Scarlet; Strikingly Vivid
Tea Rose . . . Yellow, Shaded Apricot—distinct and lovely
Mr. Van der Hoef One of the very finest of the Primrose Yellow Double Tulips
Murillo Delicate Blush Pink
Peach Blossom . . . Deep Rosy-Pink, deepening with age to a Deep Rose
Mystery of India . . . Terra Cotta with Bronze and Rose—a combination hard to describe, but exceedingly beautiful. Very Large Flowers

Group 4	} 60 Bulbs (10 ea. color)	Reg. Pr. \$5.10	Special Pr. \$4.20
Group 4A	} 90 Bulbs (15 ea. color)	Reg. Pr. \$7.65	Special Pr. \$6.40
Group 4B	} 150 Bulbs (25 ea. color)	Reg. Pr. \$12.80	Special Pr. \$10.50

FREE Flower Seeds

(SNAPDRAGON)

WITH every offer on this page, we will give Free a liberal supply of *Snapdragon* Seeds; sufficient to beautifully fill the space after your Tulips have gone. This is a superb Giant Snapdragon, a beautiful landscape creation. It has long graceful spikes on which are clusters of closely placed lovely flowers, excellent for cutting. The colors we will send you are an attractive blend: Copper King (Velvety Copper-Scarlet) and Amber Queen (Amber Suffused Chamois). With Group 1, etc., you will get enough seeds to produce 480 blooms; with group 1A, etc., enough for 720 blooms, and with group 1B, etc., enough for 1200 blooms.

YELLOW and RED

For Late May Blooming

Group No. 2 (Order by number)
Cottage and Hybrid Tulips

- La Merveille** Magnificent, large, sweet-scented, Orange-Red flower
Mentor Deepest Scarlet flowers, well formed and robust
Bouton D'Or Deep, Rich, Shining Golden Yellow, of great value for outdoor cutting
Orange King Beautiful bright Orange, very large flower
Columbus Luminous Clear Yellow with broad, vivid Red stripe; a huge flower and very showy
Primrose Beauty Dainty Primrose, bordered with delicate Rose; a beautiful tulip

Group 2	} 60 Bulbs (10 ea. color)	Reg. Price \$5.00	Special Price \$4.40
Group 2A	} 90 Bulbs (15 ea. color)	Reg. Price \$7.35	Special Price \$6.60
Group 2B	} 150 Bulbs (25 ea. color)	Reg. Price \$12.30	Special Price \$10.50

Order Now—Pay Next Fall

ORDER SHEET

ELLIOTT NURSERY CO.

NURSERYMEN AND SEEDSMEN

506 MAGEE BUILDING

PITTSBURGH, PA.

It is our desire to give you the best service obtainable anywhere.
Please help us do this by **PRINTING YOUR NAME AND ADDRESS PLAINLY**

REFERENCES

PLEASE PRINT NAME AND ADDRESS PLAINLY

Enclosed Find _____ Date _____ 19__

Checked by _____

No. _____

Send to _____

Street _____

R. F. D. _____

1st Shipment

Post Office _____

County _____

2nd " "

Express or Frl. Office _____

State _____

3rd " "

Send by _____

IF OLD CUSTOMER Please give approximated date of last order.

4th " "

IF NEW CUSTOMER Please fill in reference space.

Correspondence on Order Blank cannot be answered promptly. Please use separate sheet for inquiries, etc.

SUMMARY

CHARGES

DATE

CREDITS

To Wdsr.

Cash

Please do not write in above space

Please do not write in above space

NOTICE—Please list each variety wanted on a separate line below.

SHIPPERS CHECK

QUANTITY

A R T I C L E S

DOLLARS

CENTS

THE collections on this page will give your tulip garden Beauty in Blend, rather than beauty in contrast; effects more delicate, more subdued. These gentle pastel tints have been grouped to shade down to a blend. The collections on these two pages have been selected by Mr. Elliott, whose reputation as a landscape architect is national. Be sure to have several of these groups in your garden. Every tulip offered is healthy, virile and easy to grow.

Harmony in Blend

A PINK COLOR HARMONY

For Late May Blooming

Group No. 5 (Order by number)
Darwin Tulips

- Clara Butt . . . Delicate Salmon-Pink, fine big blooms
Europe . . . Flaming Beauty in brilliant Scarlet-Carmine
Princess Elizabeth . . . A long flower of deepest Pink
Edmee . . . Lovely Vivid Rosy Pink
Mme. Krelage . . . Pink, Light Bordered
La Fiancee . . . Beautiful
Old Rose, shading into Delicate
Pink at margin of petals. Blue Base

Group 5 . . . 60 Bulbs (10 ea. shade)
Reg. Pr. \$4.70 } Special Pr. \$3.85

Group 5A . . . 90 Bulbs (15 ea. shade)
Reg. Pr. \$7.00 } Special Pr. \$5.75

Group 5B . . . 150 Bulbs (25 ea. shade)
Reg. Pr. \$11.70 } Special Pr. \$9.45

HARMONY of BUFF, BRONZE and PURPLE

For Late May Blooming

Group No. 6 (Order by number)
Breeder Tulips

- Chestnut . . . Very Dark Chestnut Brown; a very beautiful color
Golden Bronze . . . Beautiful bright Golden Brown
Velvet King . . . Deep Purple Maroon; Immense Flowers
Bronze Queen . . . Soft Buff, inside tinged Golden Bronze
Cardinal Manning . . . Dark Rosy Violet, Orange Tipped
Wilberforce . . . Fine Apricot, edged Primrose; inside Apricot Yellow. A beautiful flower on a 32-inch stem

Group 6 . . . 60 Bulbs (10 ea. shade) Special Price \$4.30
Reg. Price \$5.25 }

Group 6A . . . 90 Bulbs (15 ea. shade) Special Price \$6.45
Reg. Price \$7.85 }

Group 6B . . . 150 Bulbs (25 ea. shade) Special Price \$10.60
Reg. Price \$13.00 }

A RED COLOR HARMONY

For Late May Blooming

Group No. 7 (Order by number)
Darwin Tulips

- Princess Juliana . . . Salmon-Orange-Scarlet, with Peacock Blue Center; remarkably beautiful
Bartigon . . . Fiery Crimson, White Center, Scarlet Margin
Europe . . . Brilliant Scarlet-Carmine
Farncombe Sanders . . . Brilliant Scarlet; Gorgeous intense coloring
Pride of Haarlem . . . Rosy Carmine
Baronne de la Tonnay . . . Vivid Pink

Group 7 . . . 60 Bulbs (10 ea. shade)
Reg. Pr. \$4.50 } Special Pr. \$3.75

Group 7A . . . 90 Bulbs (15 ea. shade)
Reg. Pr. \$6.80 } Special Pr. \$5.55

Group 7B . . . 150 Bulbs (25 ea. shade)
Reg. Pr. \$11.25 } Special Pr. \$9.15

SALMON ROSE and YELLOW HARMONY

For May Blooming

Group No. 8 (Order by number)
Cottage Tulips

- John Ruskin . . . Deep Rose-Salmon, Pale Yellow and Lilac. Exquisitely beautiful shape
Mrs. Kerrell . . . Soft Rose with Salmon Border. Base Blue and White

- Ellen Willmott . . . Soft Creamy Yellow, deliciously fragrant; very large flowers, exquisitely shaped
Fairy Queen . . . Soft Rosy Heliotrope, suffused with Salmon Yellow. a lovely colored large flower
The Fawn . . . Light Grayish Rose, changing to Rosy White
Hammer Hales . . . Golden Brown and Old Rose. Inside Apricot with Yellow Edge and Green Base

Group 8 . . . 60 Bulbs (10 each shade) Special Price \$3.90
Reg. Price \$4.75 }

Group 8A . . . 90 Bulbs (15 each shade) Special Price \$5.65
Reg. Price \$7.10 }

Group 8B . . . 150 Bulbs (25 each shade) Special Price \$9.30
Reg. Price \$11.75 }

FREE Flower Seeds

(BALSAM)

WITH every offer on this page, we will give Free a liberal supply of Balsam (Lady Slipper) Seeds, sufficient to fill the space after your Tulips have gone. This Balsam is Elliott's Improved Double, Prize Strain, Camellia-Flowered. It is excellent for house decoration, it is beautiful in any garden; for just one stalk is an old-fashioned bouquet. This Balsam is easy to grow and is very prolific. It blooms early and lasts right through the summer. The colors we will send you are a delightful harmony in Malmaison Pink and Salmon. With group 5, etc., you will get enough seeds to produce 480 blooms; with group 5A, etc., enough for 720 blooms, and with group 5B, etc., enough for 1200 blooms.



GARDEN OF DARWIN TULIPS

Giant Darwin Tulips

(FLOWER IN LATE MAY)

GORGEOUS, flaming, regal beauty . . . strong, fine lovely blooms . . . on tall, sturdy, stately stems. No wonder the Darwin is the best liked of all Tulips; no wonder it is the favorite of those who have neither the time nor the inclination to work long and hard in their gardens.

All Tulips, but especially Darwins, will thrive anywhere, in any kind of soil. And while a little care is desirable, Darwins will do surprisingly well even when neglected. So, Darwin Tulips are ideal for the

beginner; for the man with his first garden, who is troubled by the doubts and fears of inexperience.

Darwins produce vivid, striking color effects; they make an excellent special garden, or a solid bed along a boundary line. Massed in borders in front of shrubbery and hedge, they are a joy to all beholders.

For Hand Picked Mixtures, see page 2. For best Effects, allow four bulbs for each square foot to be planted.

	Per Doz.	Per 100		Per Doz.	Per 100
AFTERGLOW. Deep orange suffused with salmon and salmon edge. Large flower of good substance and unusual coloring. Carried on a tall, stately stem. Height 26 inches	1.35	\$9.50	Beethoven. Beautiful soft rose-pink, shading to silvery pink	\$1.10	\$7.50
Andre Doria. Deep velvety maroon with black base. One of the finest border varieties of its color and of a low price. Will give great satisfaction	1.25	9.00	Bleu Aimable. Beautiful lilac. Inside violet with white base and blue star. Height 25 inches	1.20	8.50
Anton Mauve. Enormous violet flower, bordered soft grayish white. Height 32 inches	1.65	11.00	CLARA BUTT. Delicate salmon-pink; one of the oldest varieties among the Darwins. It is enjoying a great popularity because of its lovely color; fine flower and reasonable price, and it remains one of the very best. Height 25 inches75	5.50
Aphrodite. The finest clear rose tulip. \$0.20 each.	2.25	15.00	CREPUSCLE. Very pale lilac with deep rose flush at the tip of petals. A large beautiful flower on a tall stem. Height 28 inches	1.10	7.50
Ariadne. Brilliant, scarlet with blue base; splendid bedder.90	6.50	DREAM. Beautiful lilac with flush of deep heliotrope. A very handsome variety which should be known better. Height 25 inches.	1.00	7.00
BARONNE DE LA TONNAYE. Vivid pink. A superb variety. \$55.00 per 1000.85	6.00			
Bartigon. Fiery crimson, white center.90	6.50			

5% Discount for Cash with Order

ELLIOTT BULBS PRODUCE A BEAUTIFUL GARDEN

	Per Doz.	Per 100
Duchess of Hohenberg. Lilac mauve with deep heliotrope flush through center of petals. Large, long flower of exquisite coloring carried on a very tall, elegant stem. Height 30 inches. \$0.30 each..	\$3.25	\$25.00
Eclipse. The finest deep red Darwin tulip. \$0.25 each	2.75	21.00
Edmee. Vivid rosy pink	1.10	7.50
Ethel Roosevelt. Lovely rose-colored flowers; very sweet scented	1.20	8.50
Europe. Brilliant scarlet-carmine85	6.00
EUTERPE. Silvery lavender edged pale lilac. Base white and blue. A long flower of beautiful shape; the finest lavender to plant with bronze Breeder tulips. Excellent for forcing.	1.00	7.00
FARNCOMBE SANDERS. Brilliant scarlet. A very handsome large flower of intense coloring. One of the finest and largest of the brilliant colored varieties. Height 25 inches.90	6.50

	Per Doz.	Per 100
Flamingo. Uniform shell pink. Pointed flower of elegant shape. Very attractive. Height 28 inches	\$1.10	\$7.50
FAUST. The finest deep purple maroon Darwin tulip.	1.25	9.00
Giant. Deep purple with reddish glow. Base white and blue. Enormous flower on strong stem. Height 28 inches.	1.75	12.00
Glory of Walworth. Heliotrope lilac, edged with paler lilac. Long, full flower with petals slightly incurved at top. A flower of unsurpassed beauty. Height 28 inches.	1.15	8.00
Glow. Glowing vermilion90	6.50
Greench. Delicate flesh color; very lovely.85	6.00
Gryphus. Brilliant, deep, shiny purple. A remarkably fine flower of excellent lasting quality. The best of its color. Height 26 inches.	1.50	10.00
Harry Veitch. Brilliant, blood-red.90	6.50
Isis. Fiery crimson-scarlet with blue base; large and beautiful	1.10	7.50



BORDER OF
DARWIN TULIPS



TULIP
CLARA BUTT



TULIP
FARNCOMBE
SANDERS

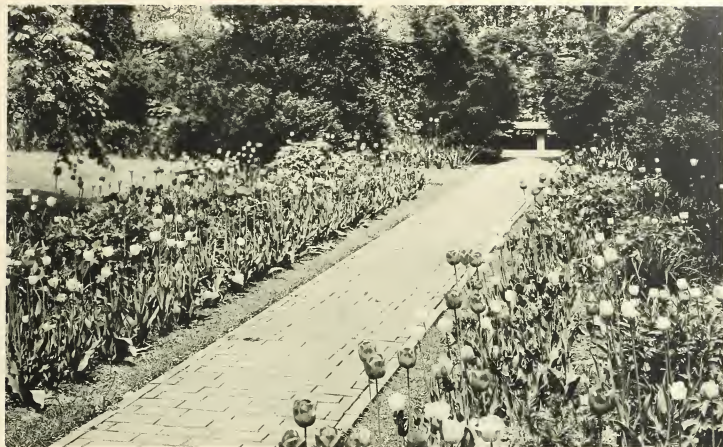
Carriage Prepaid on Every Bulb Order in the United States



MR. ELLIOTT INSPECTING THE FLOWERS OF A LEADING DUTCH GROWER

	Per Doz.	Per 100		Per Doz.	Per 100
Jubilee. Rich blue-purple with white and blue base. One of the best blue Darwins grown. Flower very large of open form and excellent substance. Strongly recommended. Height 29 inches.	\$1.75	\$12.00	MELICETTE. The finest soft-lavender Darwin tulips.	\$1.25	\$9.00
KING GEORGE V. The finest brilliant scarlet Darwin tulip. \$0.20 each.	2.25	15.00	Mrs. Potter Palmer. Bright purplish violet; fine, large flower.	1.10	7.50
King Harold. Deepest red with purple base; fine garden sort.	1.00	7.00	Nora Ware. Silvery lilac, shaded white; extremely beautiful.90	6.50
La Tristesse. Dull, slaty blue, with white base; very distinct.	1.20	8.50	Ouida. Bright scarlet; very tall; best scarlet bedder.85	6.00
La Tulipe Noire. Comes nearest of all to black; flowers of enormous size.	1.15	8.00	Painted Lady. Milk-white on dark stem; an effective combination.90	6.50
L'Ingenuë. White suffused with delicate rose, shading to deeper rose in the center of the petals. A magnificent flower of exquisite beauty. Height 27 inches.	1.10	7.50	Philippe de Commines. Velvety dark violet.	1.10	7.50
La Fiancee. Beautiful old rose shading into delicate pink at the margin of the petals. Base blue. A large, full flower of artistic coloring and excellent substance. Height 30 inches.	1.35	9.50	President Harding. Glowing violet purple with a lighter edge. One of the best of the newer tulips. \$0.25 each.	2.50	18.00
Louise de la Valliere. Bright sherry-rose, blue base marked white. A tulip of remarkable beauty and very clear coloring. One of the showiest of the Darwins. Height 24 inches. \$0.18 each.	1.75	12.00	PRIDE OF HAARLEM. Rosy carmine. A very brilliant large flower and one which we can recommend highly: It has become one of the most popular, and with good reason. Height 25 inches.85	6.00
Madame Krelage. Pink, light bordered; extra.75	5.50	Prince of the Netherlands. Brilliant rosy scarlet, shaded deep salmon-rose. A very large handsome variety of stately bearing. One of the showiest for the border. Height 30 inches.90	6.50
Marconi. Large violet flower with yellow center; distinct.	1.00	7.00	Prince of Wales. Brilliant crimson flushed scarlet. Huge flower borne on tall stem. A striking color for outdoor planting. \$0.20 each.	2.25	15.00
Massachusetts. Light pink; large flower.	1.00	7.00	PRINCESS ELIZABETH. A long flower of the deepest pink, splendid for breeding.85	6.00
MATTIA. Brilliant rosy-red, shaded lilac, blue base. Lasts longer in bloom than any other variety; splendid.	1.10	7.50	Princess Juliana. Salmon-orange-scarlet, remarkable and beautiful flower.	1.10	7.50
Maya. Satinily-lilac shaded rose. Finest of its color and one of the most beautiful tulips in cultivation. Height 28 inches. \$0.50 each.	5.50		Princess Mary. Exquisite deep pure rose. Very large substantial flowers borne on very tall stems. The tallest and most perfect of the real rose Darwins. Decidedly the finest in every respect. Do not confuse this variety with "Queen Mary," another Darwin white. \$0.60 each.	6.00	

5% Discount for Cash with Order



WALK BORDERED WITH DARWIN TULIPS

	Per Doz.	Per 100
Professor Rauwenhoff. Full cherry-rose, with ivory-white and blue star at base; flower of enormous size; very tall.....	\$1.00	\$7.00
Psyche. Soft salmon-rose; very lovely; borne on long, stiff stems.....	.90	6.50
Purple Perfection. Glossy claret-purple; large cup-shaped flower.....	1.10	7.50
QUEEN MARY. The finest cerise-rose Darwin tulip.....	1.15	8.00
QUEEN OF THE BRILLIANTS. Bright, rosy-carmine; large, showy flower of erect habit.....	1.15	8.00
Remembrance. Bluish lilac of silvery character. Inside deep violet. A grand variety. Height 25 inches.....	1.20	8.50
Reverend Ewbank. Soft, silvery heliotrope with silver-gray flush darkening towards the base; a beautiful color.....	.90	6.50
RONALD GUNN. Deep violet blue shading to lilac at the edge. One of the most beautiful blue Darwins for indoor culture and forcing.....	1.20	8.50
SALMONEA. Clear rose-pink with amber leaves. A truly beautiful and unusual variety.....	1.75	12.00
Sir Trevor Lawrence. Lilac-blue; an enormous flower on tall stem.....	1.50	10.00
Sophrosyne. Flesh colored, rose bordered silvery white; charming.....	1.10	7.50
The Bishop. Deep violet with a blue base and a white halo. Finest of its color. \$0.50 each.....	5.00	
Turner. The outside of the flower is reddish purple; the inside purple garnet. Probably the richest colored of all the tulips. \$0.75 each.....	8.25	

The Graduate's Special

Order Now ~ Pay Next Fall

SOLD WITH A MONEY-BACK BOND

TO many beginners, tulip colors are alike and equal: red is red, pink is pink, and blue is blue.

But when the amateur graduates into the expert's class, he is attracted only to that which is superfine. He seeks the subtle differences in texture, in color and light reflections. To him these qualities are priceless. This *Graduate's Hand Picked Darwin Collection* has been selected from blooming bulbs, by experts under the direction of Mr. Elliott. It will satisfy the most exacting connoisseur.

AFTERGLOW. Deep Orange and Salmon with Salmon edge
FAUST The finest Purple Maroon Tulip
La FIANCEE The finest Old Rose Tulip
LOUIS DE LA VALLIERE The finest Sherry-Rose Tulip
QUEEN MARY The finest Cerise Rose Tulip

Bargain Prices

25 Bulbs (5 each) Reg. Price \$ 2.75 . Special Price \$2.45
 50 Bulbs (10 each) Reg. Price \$ 5.50 . Special Price \$4.95
 100 Bulbs (20 each) Reg. Price \$11.00 . Special Price \$9.75

These collections must be ordered as stated—we cannot make changes or substitutions.

FREE African Daisy Seeds

With every order for this collection, we will give absolutely Free a liberal supply of African Daisy Seeds; enough to fill the space when your tulips have gone. This remarkable flower from Africa, grows in many-branched bushes, from two to three feet high. Its flowers are pale lilac-blue and pure white. It blooms from early July until hard frost. It is especially valuable as a cut flower.

Carriage Prepaid on Every Bulb Order in the United States

	Per Doz.	Per 100		Per Doz.	Per 100
VALENTINE. The finest soft heliotrope Darwin tulip.	\$1.30	\$9.50	large flower of gorgeous coloring. A very fine border variety.	\$1.00	\$7.00
Venus. Flowers of the deepest pink with paler pink at the top of the inner petals. The loveliest of all the pink tulips. Height 30 inches. \$0.35 each.	3.50	25.00	White Queen. Clear white, tinged delicate blush.	1.00	7.00
Viking. Violet with pale lavender edges; a very stately Darwin of exquisite coloring and very large size. Height 27 inches.	1.20	8.50	Yolande. Soft salmon-rose with lighter, yellow base. A very fine flower of exquisite coloring. Very fine when planted in front of evergreens. \$0.20 each.	1.75	12.00
WILLIAM COPELAND SYN. Sweet Lavender. The best Darwin Tulip for forcing. It may be grown in the house as easily as the early tulips. Also fine for the border. When grown outside, color is rosy lilac. When forced, color is beautiful lavender. Height 22 inches.	1.00	7.00	Zulu. Rich, velvety purple-black; large egg-shaped flower; very distinct.	1.10	7.50
William Pitt. Deepest rich crimson. A very			ZWANENBURG. The only pure white Darwin tulip. A truly great novelty. Large, substantial flowers on tall stems. \$0.30 each.	3.25	24.00
			Fine Mixed Darwin Tulips.	.70	5.00
			100 Darwin Tulips. In 25 named varieties (not less than 100 furnished).		6.50

ELLIOTT'S HAND MADE MIXTURE OF DARWIN TULIPS

Each Mixture Guaranteed to Contain 10 Distinct Varieties

All Named Above

25 for \$1.50

50 for \$2.85

100 for \$5.50

500 for \$25.00

1000 for \$47.50



DARWIN TULIP

All Elliott Bulbs are Twice Tested: once in Holland to eliminate undesirable bulbs, and once again on their arrival in this country, to doubly prove their perfection, and to make certain their desirability for growth in America.

THE TULIP THAT WON A BEAUTY CONTEST

The Magnificent Farncombe Sanders

(Pictured on the cover of this book)

SOLD WITH A MONEY-BACK BOND

Order Now—Pay Next Fall

DURING our Tulip show last year, we asked a thousand visitors to cut and bring to our office the five tulips they liked best. The Farncombe Sanders won by a huge majority. This result did not surprise us a bit; for many years the Farncombe Sanders has led all others in popularity. It is the world's best seller among Tulips.

The Farncombe Sanders has a glorious, stupendous beauty. Its color is an intense brilliant scarlet. Its flower is beautifully shaped and giant in size. Its stem is strong and straight, and grows 25 inches high. It is a perfect specimen of Darwin Tulip.

Plant Farncombe Sanders bulbs; plant them in masses, and some time next May they will bloom together in a blaze of glory.

50 Bulbs (Regular Price \$ 3.25)—Special Price \$ 2.75

100 Bulbs (Regular Price \$ 6.50)—Special Price \$ 5.50

500 Bulbs (Regular Price \$30.00)—Special Price \$27.50

These collections must be ordered as stated; we cannot make changes or substitutions

FREE Aster Seeds

After your tulips have bloomed, after you have stored your bulbs to plant again in the fall, you will want flowers in the space. With every order for this collection we will send Absolutely Free a liberal supply of California Giant Double Asters—the best Aster grown; big beautiful flowers, with curled and interlaced petals.

We will send you the following lovely colors: Deep Rose, Light Blue, Peach Blossom, Light Purple, Dark Purple, and White. The quantity of seeds we will send depends upon the number of tulip bulbs you order.

Read Our Special Offers



BREEDER TULIPS WITH SHRUBS IN BACKGROUND

Majestic Breeder Tulips

(FLOWER IN LATE MAY)

IN their Giant size, their Robust Growth and their Sturdy Health, Breeder Tulips are identical with Darwins; even to their time for blooming. And like the Darwins, they are ideal for the beginner as well as the professional.

The only difference between the two is in the color range. Darwins have a flaming beauty, while the Breeders run to a wide, rich variety of pastel shades.

Read the descriptions, which follow, and see how easy it is to have a Tulip Garden far from the ordinary, in its unusual and delicate beauty.

Among the Breeders are royal purples tinged with golden bronze . . . lavender, violet, primrose and glowing bronze, all in one flower . . . in another, a marvellous

blending of brown, lilac, yellow and bronze . . . and so they run; color harmonies, so lovely, and in such variety that every description makes happy reading.

It is fortunate that Breeders and Darwins grow alike and bloom at the same time. For when planted together, the result is wonderful. The adjacent illustrations will give you good ideas of these happy combinations.

For best effects allow four bulbs for each square foot to be planted.

For the Hand Made Mixtures see page two.

	Per Doz.	Per 100
Apricot. Dull, bronzy buff, shaded ruddy apricot base.	\$1.15	\$8.00
Attraction. Light bluish violet, inside glowing purple, white base	1.25	9.00
Abd-el-Kader. Dull copper bronze with lighter edge. Inside deep bronze with green base. Height 26 inches. A beautiful variety. Should be used with other bronze and brown Breeders.	1.30	9.50

Before Ordering Read Page 54

	Per Doz.	Per 100		Per Doz.	Per 100
Bacchus. Darkest blue with deep violet brown. The finest of the dark blue Breeder tulips.	\$1.75	\$12.00	General Ney. Dull old gold. A very beautiful color. Height about 25 inches.	1.10	7.50
BRONZE QUEEN. Soft Buff, inside tinged golden bronze	.90	6.50	Gloria. Dark lilac with bronzy yellow edge. Base yellow. An exquisite color. Height 21 inches. Flower medium size.	1.00	7.00
Cardinal Manning. Dark rosy violet.	1.00	7.00	GODET PARFAIT. The best bright blue violet. A very striking tulip	1.50	10.00
Charles Dickens. Deep rose with white base. Large flower of excellent color. Fine for the border. Height 22 inches.	.90	6.50	Golden Bronze. Beautiful bright golden brown. The best of its color.	1.10	8.00
Cherbourg. A deep golden yellow with the color growing stronger towards the base of the petals and with a flush of terracotta on the inside of each petal. A large sturdy tulip and unquestionably the finest of the newer sorts. \$2.00 each.	20.00		Goldfinder. Crimson flushed with orange. A very striking color among the Breeders. Height 26 inches.	1.30	9.50
Chestnut. Very dark chestnut brown. A very beautiful color.	.85	6.00	Gold Finch. Golden bronze suffused with deep lilac through center of petals. Inside deep bronze with lighter edge. Base yellow. Pointed flowers on stately stem. Height 29 inches.	1.75	12.00
COPERNICUS. Finest light brown and rose Breeder tulip.	1.20	8.50	Heliose. A beautiful combination of deep brown and old rose. Inside deep brown edged golden bronze, base yellow. Large flowers with reflexing petals. A most exquisite variety. Height 28 inches. \$0.20 each	2.25	14.00
Coridon. Clear yellow with lilac flush; the finest of its color. \$0.20 each.	2.25	15.00	INDIAN CHIEF. One of the largest and most beautiful Breeder tulips ever introduced. The flower measures often eight inches in diameter, and is carried on a strong, erect stem 33 inches high. Color, deep Indian red flushed with purple. \$0.80 each.	9.00	
Don Pedro. The finest deep coffee brown with narrow edge golden bronze.	1.65	11.00	Jaune D'Oeuf. Soft yellow with delicate lilac flush through center of petals; very beautifying. Height 26 inches.	1.10	7.50
Dryad. Old-rose flushed lilac. Edges of petals light bronze. A very beautiful color combination and one of the most magnificent of all the Breeder tulips. It is still very scarce. Height 22 inches.	1.75	12.00	La Singuliere. Silvery white margined dark maroon-crimson, which suffuses the flower with age.	1.50	10.00
Favorite. Deep purple with reddish tint. Edge of petals lighter. Flower overlaid with slaty bloom. White base. Height 29 inches.	1.20	8.50	Le Mogol. Delicate lavender suffused with deep mauve. A medium-sized flower of exquisite form and coloring. Height 25 inches.	1.10	8.00
Feu Ardent. Fiery red shading to mahogany at the base of the petals; An enormous cup-shaped flower of brilliant color.	1.25	9.00			
Garibaldi. Light brown suffused with lilac with broad edge of soft yellow; inside light bronze. Flower long with reflexing petals. Height 31 inches. One of the most beautiful varieties. Strongly recommended. \$0.60 each.	\$6.50				



BORDER OF BREEDER TULIPS



PHLOX SUBULATA IN THE FOREGROUND

Carriage Prepaid on Every Bulb Order in the United States



COLLECTION OF BREEDER TULIPS

	Per Doz.	Per 100		Per Doz.	Per 100
Lord Cochrane. Deep brown with clear yellow edge. One of the best of the brown Breeders. Height 28 inches.	\$1.30	\$9.50	with a small white base. The inside of the petals pure white. Immense egg shaped flower of most unusual coloring.	\$2.50	\$18.00
LOUIS XIV. Considered one of the most beautiful tulips in cultivation. Rich purple shading to golden bronze near the edges of the petals. The very finest of tulips.	1.25	9.00	\$0.25 each		
Lucifer. Magnificent terra cotta orange with rosy bloom.	2.00	15.00	Plutarchus. Beautiful bronze suffused with lilac. A magnificent variety.	1.00	7.00
Mabel. Deep pink with white flush through center of the petals. A fine flower of unusually clear coloring. Height 22 inches.	1.10	8.00	Prince Albert. Golden brown with purple flush. Large loose flowers slightly reflexing. Base green. The finest of its color. Height 32 inches	1.30	9.50
Madam Lethierry. Crushed strawberry with salmon flush and lighter edged. A medium-size flower of lovely color. Height 25 inches	1.10	8.00	Prince of Orange. Orange red, light border.	1.25	9.00
Madras. Splendid dark bronze.85	6.00	QUEEN ALEXANDRA. Soft sulphur-yellow. Lovely.90	6.50
Marchal Victor. Softest lavender, suffused with pale violet and primrose, shading into glowing bronze toward the edges of the petals. A very large, rather loose cup-shaped flower of exquisite coloring and gracefulness. \$0.50 each.	5.50		Saloman. Beautiful lilac, shaded silvery white. Inside deeper lilac with white base. Long loose flowers on stems 30 inches high. A magnificent variety.	1.30	9.50
Marie Louise. Rose flushed with yellow. A most pleasing combination of colors.90	6.50	St. James. Lilac, edged tan, shaded light rose. Inside mahogany with golden brown edge. Very large flower on tall stem. Height 28 inches. A superb exhibition variety	1.00	7.00
Medea. Salmon-carmine. One of the largest tulips in cultivation.90	6.50	Superba. Maroon, covered with tender, ash blooms. New and very attractive.	1.10	7.50
Mr. Groenewegen. Light coppery yellow flushed lilac with rosy edge. A beautiful combination. Height 27 inches.90	6.50	Turenne. Dark blue, heavily flushed bronze at margin; very large flower of finest color and form.	1.15	8.00
Mrs. Beecher Stowe. Fine deep purple with a velvety bloom on the outer petals. A tall tulip of splendid color and fine habit. \$0.35 each.	3.50	25.00	VELVET KING. The finest deep purple maroon tulip.	1.25	9.00
PANORAMA. Deep orange-red, shaded mahogany; immense flower of marvelous beauty.90	6.50	Violet Queen. The finest rose-velvet Breeder tulip.	1.10	7.50
Pink Pearl. The coloring of the outside of the petals is an exquisite soft violet rose			Virgilius. Violet purple. Beautiful egg-shaped flower. A striking novelty.	1.20	8.50
			Vulcaïn. Reddish apricot with broad margin of bright buff yellow, inside darker. Beautifully shaped flower in a color unlike any other.	1.50	10.00
			Wilberforce. Fine apricot, edged primrose. Inside apricot yellow. A beautiful flower on a very tall stem. Height 32 inches.	1.20	8.50

Full Cultural Directions with Every Shipment

	Per Doz.	Per 100
Yellow Perfection. Light bronze yellow, edged golden.....	\$1.00	\$7.00
Breeders. A special collection of 100 bulbs in twenty named varieties (not less than 100 bulbs supplied).....		6.50
Breeders. All colors mixed. \$45.00 per 1000.....	.75	5.50

ELLIOTT'S HAND MADE MIXTURE OF BREEDER TULIPS

Each Mixture Guaranteed to Contain 10 Distinct Varieties

All Named Above

25 for \$1.50	50 for \$2.85	100 for \$5.50
500 for \$25.00	1000 for \$47.50	

The Exquisite Sunset Glow Collection

SOLD WITH A MONEY-BACK BOND

Fine Balsam Seeds FREE
Order Now—Pay Next Fall

THE lovely colors and shades that fill the sky just before twilight . . . the delicate, peace-bringing pastel tints that come with the ending day . . . these hues are the inspiration for this Special Collection of Breeder Tulips.

Instead of vivid, vigorous, strong colors, here you have a soft, gentle glow of dainty beauty; the fragile beauty of refinement.

And with all this porcelain-like beauty, the bulbs are so virile and ruggedly healthy that they will thrive even if neglected.

The Collection

GODET PARFAIT	The finest Bright Blue Tulip
GOLD FINCH	The finest Golden Bronze and Lilac Tulip
LOUIS XIV	Royal Purple and Gold. <i>The Finest Tulip in cultivation</i>
TURENNE	The finest Dark Blue Tulip
VULCAIN	The finest Apricot and Yellow Tulip

Bargain Prices

25 Bulbs (5 each) Regular Price \$ 3.00	Special Price \$2.65
50 Bulbs (10 each) Regular Price \$ 6.00	Special Price \$5.25
100 Bulbs (20 each) Regular Price \$12.00	Special Price \$9.90

These collections must be ordered as stated—we cannot make changes or substitutions.

The FREE Seeds

WHEN your tulips have gone, what will you put in their place? Let us answer this question. With every order for the above collection, we will send Free, a large supply of Elliott's Balsam (Lady Slipper) Seeds: These flowers are beautiful for house decoration, and equally beautiful in any garden; for just one stalk is an old-fashioned bouquet. This Balsam is Elliott's Improved Double, Prize Strain, Camellia-Flowered—easy to grow and very prolific. It blooms early and lasts right through the summer. The colors we will send you are a delightful harmony in Malmaison Pink and Salmon.

Special Varieties Illustrated in Color On Opposite Page →

Per Doz. Per 100

No. 1 — Copernicus
(Breeder). Finest light brown and rose Breeder tulip.. \$1.20 \$8.50

No. 2 — Louis XIV
(Breeder). Considered one of the most beautiful tulips in cultivation. Rich purple shading to golden bronze near the edges of the petals. The very finest of tulips. 1.25 9.00

No. 3 — Euterpe
(Darwin). Silvery lavender edged pale lilac. Base white and blue. A long flower of beautiful shape, the finest lavender to plant with bronze Breeder tulips. Excellent for forcing.. 1.00 7.00

No. 4—Godet Parfait
(Breeder). The best bright blue violet. A very striking tulip. 1.50 10.00

No. 5—Baronne de la Tonnaye (Darwin). Vivid Pink. A superb variety.... .85 6.00

Special Offer of Varieties Illustrated in Color On Opposite Page →

Collection No. 1
Five bulbs each of the 5 varieties (25 bulbs)..... \$2.10

Collection No. 2
Ten bulbs each of the 5 varieties (50 bulbs)..... 3.90

Collection No. 3
Twenty bulbs each of the 5 varieties (100 bulbs)..... 7.50

Collection No. 4
Thirty bulbs each of the 5 varieties above (150 bulbs) 11.25

Tulips are Perfect for House Decoration



1
COPERNICUS

EUTERPE
3

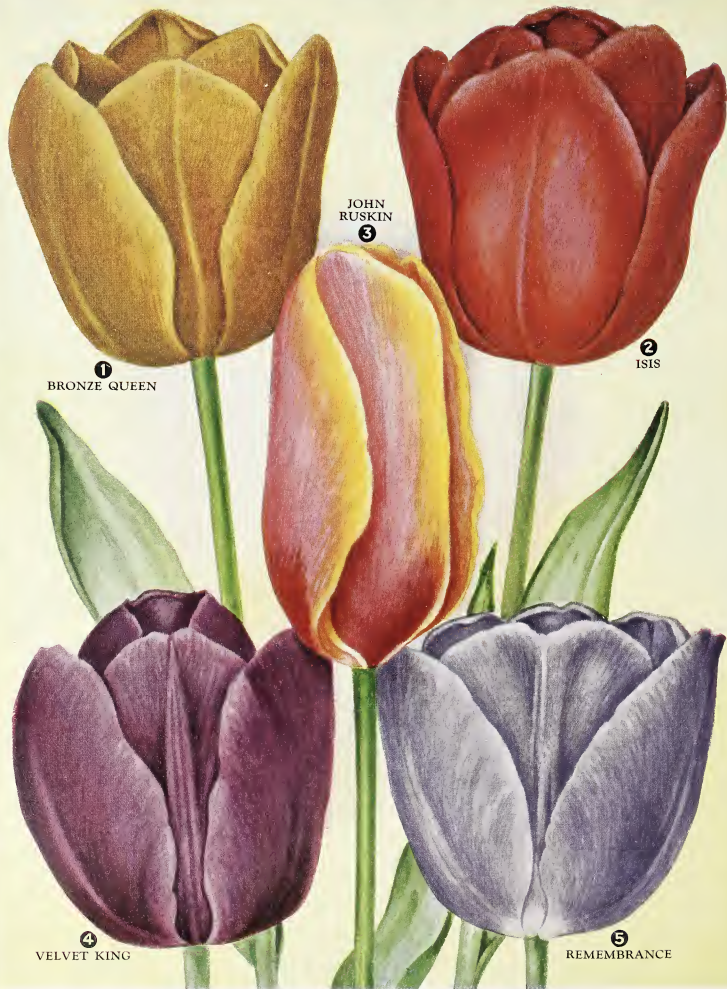
2
LOUIS XIV

4
GODET PARFAIT

5
BARONNE DE LA
TONNAYE

SPECIAL OFFERS OF THESE BEAUTIFUL TULIPS ON OPPOSITE PAGE





1
BRONZE QUEEN

JOHN
RUSKIN
3

2
ISIS

4
VELVET KING

5
REMEMBRANCE

**Special Varieties
Illustrated in Color
← On Opposite Page**

Per Doz. Per 100

- No. 1 — Bronze Queen (Breeder).** Soft buff, inside tinged golden bronze \$0.90 \$6.50
- No. 2 — Isis (Darwin).** Fiery crimson-scarlet with blue base; large and beautiful 1.10 7.50
- No. 3—John Ruskin (Cottage).** Deep rose salmon, edged pale yellow. Inside lilac suffused with soft rose and yellow margin. Very long flower of exquisite beauty. We recommend it highly. Height, 16 in. .90 6.50
- No. 4—Velvet King (Breeder).** The finest deep purple maroon tulip. 1.25 9.00
- No. 5 — Remembrance (Darwin).** Bluish lilac of a silvery character. Inside deep violet. A grand variety. Height, 25 inches... 1.20 8.50

**Special Offer of
Varieties Illustrated
in Color
← On Opposite Page**

- Collection No. 5**
Five bulbs each of the 5 varieties (25 bulbs)..... \$2.00
- Collection No. 6**
Ten bulbs each of the 5 varieties (50 bulbs)..... 3.90
- Collection No. 7**
Twenty bulbs each of the 5 varieties (100 bulbs)..... 7.75
- Collection No. 8**
Thirty bulbs each of the 5 varieties above (150 bulbs) 10.50



DOROTHY ELLIOTT INSPECTING NEW HYBRID TULIPS

New Hybrid Tulips

An Achievement in 'Rare Colors'

(FLOWER IN LATE MAY)

THIS tulip is the scientific victory of a Dutch Scientist. He has accomplished the impossible; the *pure white*, and the *pure yellow*. To the artist-gardener, this accomplishment has satisfied a yearning long considered hopeless. To the tulip lover, who is more interested in beauty than in science, the New Hybrid provides a color range hitherto impossible; it gives you the rainbow; all the colors of the sky and the spectrum to play with.

As the New Hybrid is a blood relation to the Darwin and the Breeder, it combines all the desirable qualities of both, and more. It thrives everywhere; it is healthy and strong and its blooms are large and lovely. It is definitely in the Giant Class. It is more desirable, because concentrated in one flower, there are color combinations impossible in the Darwin or Breeder. For several years, the New Hybrid will be a semi-rare bulb, for it is a new bulb. So, its price is somewhat higher than those that are plentiful.

Imagine having tulips like these for cut flowers: in one flower, orange, red, deep red, brilliant orange, black and yellow—in another, bronze and gold—and in another, lilac and white. But read the descriptions and envision the beauty the New Hybrid will bring to your garden.

For best effects allow four bulbs to each square foot to be planted.

Carriage Prepaid on Every Bulb Order in the United States

	Per Doz.	Per 100
Aegir. A very large and beautiful dark rose.	\$1.15	\$8 00
Ambrosia. Beautiful bronze flushed lilac-rose. \$0.25 each.....	2.50	18.00
Arethusa. Most beautiful soft yellow. \$0.30 each.....	3.00	23.00
Argo. A deep golden yellow flower which is, nevertheless, very soft and is penciled towards the top edge of the petals with orange. \$0.20 each.....	2.00	15.00
Carrara. Enormous pure white flower on a tall stem. \$0.25 each.....	2.75	18.00
Colonel Lindbergh. The newest of the yellow Hybrid Tulips and the most beautiful so far produced. \$3.50 each.....	36.00	
Dido. Soft orange-red gradually suffusing to a deep red at the extremes of the petals. The inside of the flower is a clear brilliant orange without a blemish and strikingly beautiful. The base of the flower is black bordered deep yellow. A flower of gorgeous extravagance in color and royally placed on a tall strong stem. 30 inches high. \$0.35 each.....	3.50	25.00
Golden Fleece. A beautiful golden-yellow with bronze shadings. \$0.45 each.....	4.50	
Honeymoon. Large fine flowers of the softest primrose. Unusually tall growing up to 36 inches and therefore the most de-		

	Per Doz.	Per 100
irable variety for planting among the Darwin tulips. In the Darwin tulip group no satisfactory yellow has yet been developed. \$0.20 each.....	\$2.00	\$13.00
Illias. The new heliotrope tulip and a very attractive variety. \$0.20 each.....	2.00	13.00
Jeanne Desor. The flowers are a deep yellow bordered orange-red. \$1.50 each.....	15.00	
Leda. A beautiful new rosy-red variety. \$0.40 each.....	4.50	
Marvel. The flowers are salmon-rose with yellow and terra cotta markings.....	1.25	9.00
Mentor. Flowers of the deepest scarlet, well formed and robust, growing on a strong stem.....	1.15	8.00
Nectar. Beautiful deep carmine pink flowers slightly reflexed, graceful in form. Blooms earlier than the other tulips. Very strongly recommended.....	1.20	8.50
Rosabella. Lilac-rose flowers with a white border. \$0.25 each.....	2.50	18.00
Sulphur Queen. A large beautiful sulphur yellow flower. Finest of its color. \$0.30 each.....	3.00	20.00
Yellow Giant. Pure golden yellow. The long sought yellow to plant with the Darwins and Breeders and one of the most beautiful tulips in cultivation. Height 38 inches. \$1.75 each.....	18.00	



TULIP MENTOR



TULIP ROSABELLA

For the convenience of our customers who may wish to plant circular beds, we are giving the diameters of circles from 3 to 12 feet. The diameters are approximate since any area greater or less than $\frac{1}{2}$ square foot is not considered since it will have no bearing on the number of bulbs required.

A circle 3 feet in diameter has an approximate area of $7\frac{1}{2}$ square feet.

A circle 4 feet in diameter has an approximate area of $12\frac{1}{2}$ square feet.

A circle 5 feet in diameter has an approximate area of $19\frac{1}{2}$ square feet.

A circle 6 feet in diameter has an approximate area of 28 square feet.

A circle 7 feet in diameter has an approximate area of $38\frac{1}{2}$ square feet.

A circle 8 feet in diameter has an approximate area of 50 square feet.

A circle 9 feet in diameter has an approximate area of $63\frac{1}{2}$ square feet.

A circle 10 feet in diameter has an approximate area of $78\frac{1}{2}$ square feet.

A circle 11 feet in diameter has an approximate area of 95 square feet.

A circle 12 feet in diameter has an approximate area of 113 square feet.

Order Now—Pay Next Fall



MASS PLANTING OF ENGLISH GARDEN TULIPS

The Patrician of Bulbs

Old English Garden Tulips

(FLOWER IN MAY)

CENTURIES of breeding are behind Old English Garden Tulips (Cottage Tulips). They have every attribute of their ancient and aristocratic lineage. Their shapes are many; they vary from the long, pointed, reflexed sort to the round, cup-shaped variety.

But all have the beauty, the grace, the elegance that come from generations of careful breeding. And with this careful breeding have come sturdy permanence, healthy growth and ever-satisfying beauty.

While some Old English Garden Tulips have long stems and large blooms, others do not; the slender, daintily shaped blooms have shorter stems. So, some should not be planted in masses; they make a better show when they have a background . . . in front of shrubbery, among perennials. They are charming

among rose plants, as they bloom before the roses do.

Old English Garden Tulips give you the opportunity to fill your spring garden with many delightful beauty spots. Read the descriptions carefully; they will help you a lot in making your selections.

Would you like sweet-scented tulips? Here are some. Do you want the colors of your tulips to harmonize not only with themselves, but also with their surroundings? Your wish can be gratified, for the color range is wide: single colors . . . soft, delicate, beautiful blends and flushes . . . vivid, strong, contrasty colors . . . from one to six shades in a single flower.

For best effects allow five bulbs for each square foot to be planted.

For Hand Made Mixture See Page 2.

The Elliott Money Back Bond Protects You



BORDER
PLANTING
OF
MAY-
FLOWERING
TULIPS



TULIP
GESNERIANA SPATHULATA



TULIP
MRS. MOON



TULIP
SIRENE

All the Tulips pictured on this page are included in the Patrician Collection, which is offered on opposite page.

All the Tulips pictured on this page are included in the Patrician Collection, which is offered on opposite page.

Carriage Prepaid on Every Shipment in the United States

	Per Doz.	Per 100		Per Doz.	Per 100
Amber Crown. Pale yellow with broad stripe of lilac brown through center of petals. Base green. A beautiful variety. Height, 18 inches.	\$1.10	\$7.50	Columbus. Clear yellow with broad red stripe through the center of petals. A huge flower and very showy.	\$1.30	\$9.50
AVIS KENNICOTT. Rich deep yellow, with black base. A very large flower and one of the best bright yellow Cottage Tulips. Height, 25 inches.	1.75	12.00	ELEGANS ALBA. Large white flower of exquisite gracefulness. Each petal reflexing and margined with rosy carmine. One of the most lovely Cottage Tulips in existence. Height, 20 inches. \$0.20 each.	2.00	13.00
Bouton d'Or. Deep golden yellow; of great value for outdoor cutting. Splendid \$52.50 per 100085	6.00	ELLEN WILLMOTT. One of the finest Cottage Tulips. Flowers very large, exquisitely shaped, of a soft creamy yellow, deliciously fragrant. Height, 18 inches.90	6.50
Carnation. The old English Picotee. Snow-white, changing to carmine-rose, exquisitely beautiful.85	6.00	Fairy Queen. Soft rosy heliotrope, suffused with salmon yellow. A very large flower, with a lovely color. Height, 20 inches.85	6.00

Aristocratic from the Ground Up

The Patrician Collection

SOLD WITH A MONEY-BACK BOND

Order Now ~ Pay Next Fall
High Class Dahlia Seeds FREE

IF you seek cultivated grace and exquisite beauty for your Tulip Garden, be certain to get this collection of the most aristocratic of all tulips. Here we have selected the most attractive varieties of Old English Garden, or Cottage Tulips. Several of the blooms are pictured on page twenty, opposite.

This collection is a splendid exemplification of the centuries of breeding and noble lineage that are symbolized in every one of these bulbs.

GESNERIANA	The Finest Red Cottage Tulip
JOHN RUSKIN	Exquisite Salmon Rose and Yellow
MRS. KERRELL	Beautiful soft Rose and Salmon
MRS. MOON	The Finest pure Yellow Tulip
SIRENE	Beautiful Satiny Rose

Bargain Prices

25 Bulbs (5 each) Reg. Price \$2.20 . Special Price \$1.90
50 Bulbs (10 each) Reg. Price \$4.35 . Special Price \$3.75
100 Bulbs (20 each) Reg. Price \$8.70 . Special Price \$7.20

These collections must be ordered as stated—we cannot make changes or substitutions.

The FREE Seeds

AFTER these tulips have bloomed and you have put away the bulbs, we offer our unusually lovely, highest grade dahlias for the empty space. Contrary to general belief, dahlias grown from seed, grow faster, bloom earlier, and the flowers last longer, than those grown from tubers. With every order for the above collection, we will send Absolutely Free a liberal amount of Dahlia Seeds—more than enough to again beautify the space after the tulips are gone.

The flowers from these seeds will be equal in size and beauty to the results from the costliest tubers. The flowers will be mixed colors.

Flava. Lemon yellow; large beautiful flower on a tall, stiff stem. A fine variety to plant among the pink lavender and lilac Darwin Tulips. Will remain in bloom longer than almost any other Cottage Tulip. Height, 25 inches. \$0.25 each	2.75	20.00
Gesneriana aurantiaca maculata (Orange Globe). Large; brilliant orange; extra fine	.90	6.50
GESNERIANA SPATHULATA. For bedding out in masses it deserves to be largely grown. Height 18-24 inches. Flowers of enormous size, on long, graceful stems. Color rich crimson-scarlet, with glittering blue-black center. The demand for this grand Tulip has been so great that it is very difficult to get flowering bulbs. To be sure of getting bulbs that will bloom, we pay a premium in Holland for guaranteed bulbs. This makes them higher priced, but our bulbs will bloom satisfactorily.85	6.00
Gesneriana ixoides. Beautiful yellow, with black center	1.10	7.50
Gesneriana lutea. Pure yellow, extra fine.85	6.00
Glare of the Garden. Immense scarlet flowers	1.10	7.50
Golden Crown. Yellow. Slightly edged with red. Fine for bedding80	5.75
Hammer Hales. Golden brown, suffused with old rose. Inside apricot with yellow edge and green base. A very long beautiful flower. Height, 24 inches.	1.00	7.00
Idyll. Lively rose of fine texture. Inside salmon-pink. A very lovely variety.85	6.50
Illuminator. Clear yellow, flamed deep orange. A very large flower with a striking color. Very effective when planted among shrubbery or evergreens. Height, 25 inches. \$0.15 each.	1.50	10.00
Innocence. One of the very few pure white Cottage Tulips and by far the best. A large flower of fine form and stately bearing. Height, 20 inches. \$0.30 each.	3.00	23.00
INGLESOMBE PINK. Salmon-pink; blue base; very brilliant. \$48.00 per 100075	5.50
Inglescombe Scarlet. Brilliant; scarlet; enormous flower. \$55.00 per 100085	6.00
INGLESOMBE YELLOW. Glossy canary yellow. The large globular flower has the true shape of the Darwin Tulip, hence it is called the Yellow Darwin. \$55.00 per 1000	.85	6.00
Isabella, or Blushing Bride (Shandon Bells). Beautiful rose-pink, slightly shaded white; a most superb and distinct variety. \$52.50 per 100080	5.75
JOHN RUSKIN. Deep rose-salmon, edged pale yellow. Inside lilac suffused with soft rose and yellow margin. Very long flower of exquisite beauty. We recommend it highly. Height, 16 inches.90	6.50

All Your Money Back If You Are Dissatisfied

Per Doz. Per 100

Kingfisher. Soft yellow ground, feathered maroon and violet with green base. A very unique color combination. Height 18 inches, \$0.25 each.	\$2.75	\$19.00
La Merveille. A magnificent variety, with large, sweet-scented, orange red flowers.85	6.00
Moonlight. New. Light, soft yellow, enormous flower85	6.50
MRS. KERRELL. Soft rose with salmon border. Base blue and white. Large open flower with pointed petals. A lovely variety. Height, 18 inches	1.20	8.50
Mrs. Moon. Pure yellow, large. The best of all yellow late Tulips; sweet-scented	1.20	8.50
Orange King. Beautiful bright orange, very large flower90	6.50
PICOTEE, OR MAIDEN'S BLUSH. Long; clear white; the petals, which are pointed and elegantly reflexed, are beautifully margined and penciled on edges with bright pink. \$52.50 per 1000	80	5.75
Picotee Yellow. The yellow counterpart of the above variety. Flowers are clear yellow with a narrow border of crimson which suffuses the flower as it ages. A lovely graceful variety.90	6.50
Primrose Beauty. Primrose, bordered rose; a beautiful Tulip.85	6.00
Pride of Inglescombe. White, edged carmine-rose; long, pointed flower; beautiful. \$20 each.	2.00	13.00
Quaintness. Golden bronze with old rose flush. A very unusual and beautiful color combination. One of the finest varieties. Height, 20 inches. \$0.25 each.	2.50	18.00
Retroflexa. Splendid yellow flower, with elegantly recurved petals; fine for cutting.	1.10	7.50
Royal White. Large; pure white; of great substance.	1.20	8.50
SIRENE. Glistening satiny rose with paler edges. One of the Lily-shaped varieties of exquisite beauty. Height, 16 inches.	1.10	7.50
Solfatara. Soft sulphur-yellow; a large graceful flower with reflexing petals	1.15	8.00
Solferino. Creamy white, with narrow border of soft yellow. Long, eggshaped flower of a most lovely color. Unsurpassed when planted in the shade. Height, 24 inches	1.75	12.00
The Fawn. Large; light grayish rose, changing to rosy white. Distinct85	6.00



Per Doz. Per 100

Twilight. Light violet ground, flamed deep violet and bronze with distinct white stripe through the center of each petal and a white base. A very long finely shaped flower of an unusually rich coloring. Height, 23 inches. \$0.25 each.	\$2.50	\$18.00
Union Jack. Salmon-pink and bronze-striped. Unique and effective.	1.65	11.00
WALTER T. WARE. The deepest and richest of all the Yellow Cottage Tulips. A remarkable beautiful flower of great substance. Height, 18 inches.	1.75	12.00
Zomerschoon. Pure white ground. Flaked and feathered salmon-rose. Base white. A beautiful formed flower of unusual clear coloring. Height, 20 inches. \$0.75 each	8.25	
May-flowering Special Mixture. \$45.00 per 100070	5.00

ELLIOTT'S HAND MADE MIXTURE OF COTTAGE TULIPS

Each Mixture Guaranteed to Contain 10 Distinct Varieties (All Named Above)

25 for \$1.40

50 for \$2.75

100 for \$5.00

500 for \$23.75

1000 for \$45.00

The Connoisseur's Collection of Pedigreed Tulips

THE painstaking seeker of the finest expression of tulip beauty will find complete satisfaction in this collection. Here is achieved those delicate differences in color, texture and light reflections that the expert can best appreciate. Here, too, are the exquisitely beautiful shapes that personify the centuries of breeding that are the background of Old English Garden Tulips. Like all Elliott Bulbs, these are easy to grow, and require a minimum of attention.

[These varieties were carefully selected by a committee of experts, headed by Mr. Elliott]

AMBER CROWN Exquisite pale Yellow and Lilac
ELEGANS ALBA Lovely White with Carmine edge

ILLUMINATOR Yellow with an Orange Flame
QUAINTNESS Golden Bronze and Old Rose

WALTER T. WARE, The deepest and richest Yellow Cottage Tulip

25 Bulbs (5 each) — Regular Price \$ 3.70 — Special Price \$ 3.35

50 Bulbs (10 each) — Regular Price \$ 7.33 — Special Price \$ 6.65

100 Bulbs (20 each) — Regular Price \$ 14.70 — Special Price \$ 13.25

These collections must be ordered as stated; we cannot make changes or substitutions.

FREE Flower Seeds

NIGELLA (Love-In-A-Mist)

WITH every order for this collection, we will send a liberal quantity of Nigella (Love-In-A-Mist) Seeds — sufficient to plant the space vacated by the tulips, after they have bloomed. This unusual flower is a compact growing plant with delicate, lacy foliage and unusually formed attractive flowers. We will send you two colors—Blue and White.

Carriage Prepaid on Every Bulb Order in the United States



WALK BORDERED WITH TULIPS WHITE HAWK AND COULEUR CARDINAL

The Gay and Friendly Early Tulips

(FLOWER IN APRIL)

{ Our Money-Back Bond does not apply on these in the Far South. The strong sun makes them bloom too soon; the flowers come when the stems are just an inch or so above the ground. In other latitudes this "forcing" does not happen, and our Money-Back Guarantee does apply. }

LIKE the Robin, these tulips gladden the heart with the news that spring has really arrived. They are among the first flowers to bloom, after the drab barrenness of winter; their gay glowing colors are welcome carriers of happiness.

Early Tulips seem to belong in the front of the house. Group them on either side of the front door, along the entrance walk, and here and there, wherever you would like a beauty spot.

As you read the descriptions of the different varieties, you will see that Nature has colored them just

right to make them true harbingers of the Gladness of Spring . . . rose pinks . . . various shades of yellow . . . rose and lilac . . . cherry red . . . gold . . . primrose . . . violet, and so on.

These Early Tulips bloom about 40 days ahead of the late varieties, so they flower and go, in abundant time for you to replace them with other plants.

For best effects allow five bulbs for each square foot to be planted.

For Hand Made Mixture, see Page 2.

NAMED SINGLE EARLY TULIPS

Prices quoted are for orders booked July 1, 1930

	Per Doz.	Per 100
Artus. Brilliant red	\$0.75	\$5.50
Augusta. Lovely clear rose-pink; extra large flower of fine shape. Forces early	1.00	7.00
Aurora. Saffron yellow, shaded pink. Very exquisite. \$0.25 each	2.75	19.00
Belle Alliance. Scarlet; very fine	1.10	7.50
BLUSHING BRIDE. Lovely bright pink; very early	1.00	7.00
Cardinal Rampollo. New. Yellow, bordered orange; a conspicuous color	1.60	11.00
Chrysolara. Large; golden-yellow; best yellow for outdoors	1.15	8.00
Couleur Cardinal (True). Cardinal-red; one of the best	1.10	7.50
Cottage Maid. White; edged with rose; extra fine; lovely; splendid for bedding85	6.50
Cottage Boy. Bronze-yellow, with orange	1.00	7.00

	Per Doz.	Per 100
DE WET. Beautiful deep orange, shaded golden yellow at the base of the petals. A very artistic flower and one of the finest newer sorts in cultivation. There is no other orange variety which equals it in brilliancy. It is therefore one of the showiest bedders, and as it forces splendidly we can recommend it for all purposes. \$0.20 each	\$2.00	\$15.00
Diadem. A new and very beautiful pearly pink Tulip. \$0.35 each	3.85	30.00
Diana. Purest white with yellow base. Extra fine handsome flower and one of the finest white early Tulips in existence. We strongly recommend it85	6.00
Fred Moore. Dark orange; very tall; early90	6.50
Fortuna. Silvery satin rose shaded lilac changing with age to pure rose. Very large oval flower on a tall stem. Unquestionably the finest of the newer tulips. \$0.35 each	3.50	25.00

Ours Is the Largest Bulb House in the World

	Per Doz.	Per 100		Per Doz.	Per 100
Goldfinch. Golden yellow; sweet-scented; a splendid sort	\$1.20	\$8.50	Pink Beauty. True. Bright pink and white extra fine. \$0.20 each	\$2.00	\$15.00
Hobbema (Sarah Bernhardt). Crushed Strawberry; distinct and lovely	1.15	8.00	Primrose Queen. Soft primrose; distinct, lovely for bedding or forcing	90	6.50
Ibis. Deep rose, flushed white at the bottom of the petals and yellow base. A beautiful flower of great substance and brilliant coloring	1.20	8.50	Prince of Austria. True. Orange shaded scarlet; very fine	85	6.00
JOOST VAN VONDEL. Large; cherry-red and white; splendid	1.00	7.00	PROSERPINE. Queen of Tulips. Silky carmine-rose; perfect form. Sweet-scented	1.15	8.50
Keizerskroon. Red and gold; large and fine. A grand Tulip	1.50	10.00	Queen Alexandra. Pure glowing carmine. A magnificent new variety for the border. will give great satisfaction	1.50	10.00
KOHINOOR. The darkest red single early Tulip. Flowers are finely shaped and of a rich, velvety deep crimson. A fine variety for massing	1.25	9.00	Rising Sun. Deepest golden yellow. Gigantic, long flower of elegant form borne on a strong stem 16 inches tall. By far the finest of the deep yellow early Tulips	1.20	9.00
LADY BOREEL. White. Silvery white; magnificent flower; the finest	1.10	7.50	VAN DER NEER. Deep violet. Very large open flower beautifully formed. A superb bedding Tulip. Especially attractive when planted in combination with a primrose yellow variety	1.25	9.50
La Reine Maximus. A great improvement of the old variety La Reine which is no longer a satisfactory bloomer. Flowers are twice the size of the old variety and of the same lovely rosy white	1.00	7.00	Vermilion Brilliant (True). Dazzling scarlet; very striking	1.10	7.50
La Riante. Most lovely bright pink, shaded carmine-rose; very attractive	85	6.00	White Beauty. This is a pure white sport of pink beauty and it is destined to become quite as popular as its parent. Flowers large, of fine substances and purest white	1.50	10.00
Max Havelaar. Blood orange, flushed salmon rose; a unique variety with striking color. Fine for bedding and forcing	1.00	7.00	White Hawk (Albion). The finest pure white tulip in cultivation	90	6.50
MON TRESOR. Yellow; extra fine; best yellow for early forcing	1.25	9.50	White Swan. White, late, large and fine	85	6.00
Moonbeam. Primrose yellow, with lighter yellow edge. An exceptionally large open flower. A magnificent variety and in our opinion the finest yellow early	1.70	12.00	Extra Fine. Single Mixture. While the bulbs are not as fine in quality as the named sorts listed above, they are, nevertheless, the finest mixture it is possible to obtain. We have discontinued all lesser grades as being untrustworthy. \$48.00 per 1000	.75	5.50

ELLIOTT'S HAND MADE MIXTURE OF SINGLE EARLY TULIPS

Each Mixture Guaranteed to Contain 10 Distinct Varieties

All Named Above

25 for \$1.50

50 for \$2.85

100 for \$5.50

500 for \$26.25

1000 for \$50.00

TULIP LADY BOREEL

TULIP KEIZERSKROON



5% Discount for Cash with Order

For an April Tulip Garden

The Spirit of Spring Collection

SOLD WITH A MONEY-BACK BOND—Order Now—Pay Next Fall

THE promise of spring fulfilled is symbolized in the gay and friendly colors of this happy Early Tulip collection. When flowers are needed the most, and when they are best appreciated, these lovely Tulips come into beautiful bloom. No matter what you plan for your garden, there is time and room for these Early Tulips. Be sure to get some.

The Collection

AUGUSTA The Best Rose-Pink Early Tulip
COULEUR CARDINAL The Best Red Early Tulip
KEIZERSKROON Red and Gold. The Finest of its color
RISING SUN The Best Golden Yellow Early Tulip
WHITE HAWK The Finest Pure White Tulip in cultivation

Rare Balcony Petunia Seeds FREE

WITH every order for this collection, we will send free a good sized packet of Balcony Petunias for window boxes, etc. Mr. Elliott discovered these petunias in Germany, and believes them to be the most effective balcony decoration he has ever seen. The seeds we offer you produce flowers of a lovely, rich Violet-Blue—a color never seen in petunias before. They will give the front of your balconies or window boxes a solid sheet of unusual color.

Prices of Spirit of Spring Collection

25 Bulbs (5 each)—Regular Price \$2.40—Special Price \$2.20
 50 Bulbs (10 each)—Regular Price \$4.75—Special Price \$4.40
 100 Bulbs (20 each)—Regular Price \$9.50—Special Price \$8.75
 These collections must be ordered as stated—we cannot make changes or substitutions.

For Those Who Would Be Exclusive

The New Mendel Tulips

(FLOWER IN LATE APRIL)

FOR those who want to be in the advance of things, for the gardener who takes pride in having tulips others are not likely to have, for the man who likes to introduce the new and unusual to his neighbors, here is the New Mendel.

It is the newest thing in tulips, and the present vogue in smart European Society. The strain is new, the bulbs are very scarce. The New Mendel has not been generally tested in America, but Mr. Elliott saw them in Holland, and selected a few of the best varieties.

We have tried out these varieties in our own fields; so we are satisfied that they will thrive in this country. *We do not hesitate to sell them with our Money-Back Bond.*

The New Mendel is unquestionably the Tulip of The Future. Its blooms are as big as the Darwin's, it has the same brilliant color range, the same robust health, but its own distinctive and beautiful shape. Also, it blooms several weeks ahead of the Darwins, and can be grown in the house in winter months.

For best effects allow five bulbs for each square foot to be planted.



TULIP ALSACE

	Per Ea.	Per Doz.
ALSACE. Rosy-carmine. Beautiful egg-shaped flower. \$18.00 per 100	\$0.25	\$2.75
APRIL QUEEN. Soft lilac-rose	50	6.00

	Per Ea.	Per Doz.
DARLING. Beautiful carmine-pink	\$0.75	\$8.25
ORANJA. Bright orange-scarlet30	3.00
MRS. EVANGELINE LINDBERGH	1.00	11.00

Carriage Prepaid on Every Bulb Order in the United States



TULIP GOLDEN KING



TULIP MURILLO



TULIP PEACH BLOSSOM

The Double Varieties of Early Tulips

(FLOWER IN APRIL)

WHETHER one shall plant the single Early Tulips or the double Early Tulips depends on whether one prefers delicate grace or massive strength. Of the two the double Tulips are heavier and more sturdy and last longer in bloom. The color range of both groups is almost identical. However, the double Tulips are about a week later coming into bloom.

Like the single Early Tulips, the double kinds are best grouped at the entrance, though because of their

heavier texture they are very effective planted in beds by themselves. They will thrive with very little attention and are, therefore, specially recommended for cemetery planting.

All double Early Tulips may be grown in the house during the winter months. See Page 27.

For best effects allow five bulbs for each square foot to be planted.

For the Hand Made Mixture, see Page 2.

	Per Doz.	Per 100
Azalea. The finest of the dark rose double tulips	\$1 15	\$8 00
Boule de Nieve (White Peony). New pure white, large, peony-like flower, splendid	90	6 50
Crown of Gold. Splendid yellow; fine for forcing	1 10	7 50
Electra. Sport of Murillo. Carmine red. Beautiful color, larger and more double than its parent	1 75	12 00
Gloria Solis. Deep scarlet edge, with bright yellow	1 10	7 50
GOLDEN KING. Pure canary yellow. A very large beautiful flower. The finest of the yellow Double Tulips. Very effective. Height, 13 inches	1 40	10 00
IMPERATOR RUBRORUM. Brilliant scarlet; fine for forcing and one of the grandest for bedding	1 20	8 50
La Candeur. Pure white; a splendid bedding kind	90	6 50
Lac Van Haarlem. Brilliant rosy velvet; a unique color; very large flower	1 20	8 50

	Per Doz.	Per 100
Lady Godiva. Very beautiful canary yellow flower. Large and very double	\$1 75	\$12 00
La Grandesse. Dark pink; large and very double	1 00	7 00
Lucretia. Fine pink; large	90	6 50
Mr. Van der Hoef. A yellow sport of Murillo with all its superb qualities. One of the very finest of the primrose yellow Double Tulips. A very lovely flower. Height, 13 inches	1 15	8 00
MYSTERY OF INDIA. The color is terra cotta with bronze and rose, a combination hard to describe but exceedingly beautiful. The flower is of tremendous size and very double and the stem is longer and stiffer than is usual in tulips of this group	1 10	7 50
MURILLO. Delicate blush-pink. A very fine flower with a lovely color. An old variety but still one of the handsomest of the Double Tulips. It forces very easily	75	5 50
Oranje Nassau. A beautiful orange red sport of Murillo. \$0 50 each	5 50	

Our Money-Back Bond does not apply on these in the Far South. The strong sun makes them bloom too soon; the flowers come when the stems are just an inch or so above the ground. In other latitudes this "forcing" does not happen, and our Money-Back Guarantee does apply.

Order Now—Pay Next Fall

	Per Doz.	Per 100		Per Doz.	Per 100
Peach Blossom. Deep rosy-pink, deepening with age to a deep rose. A very fine flower with a wonderful color. A new variety of superb quality, which we are glad to recommend. Height, 12 inches....	\$1.10	\$8.00	TEA ROSE (Brimstone Beauty). Yellow, shaded apricot, distinct and lovely.....	\$0.85	\$6.00
Prince of Orange. Bright, rich orange: large flower.....	1.40	9.50	Tournesol. Red and yellow. A most show-striking flower.....	1.15	8.00
RUBRA MAXIMA. Early, bright red; splendidly bedder, taking the place of Rex Rubrum.....	1.15	8.00	Titan. Crimson-scarlet, edged with golden-yellow, fine for bedding.....	1.40	9.50
Salvator Rosa. White and deep rose. A surpassingly beautiful flower.....	1.10	7.50	Toreador. Reddish orange and yellow.....	1.50	10.00
SCHOONOORD. A pure white sport of Murillo: very beautiful large flowers. The finest of the pure white Double Tulips..	.85	6.00	VUURBAEK. Bright vermilion: splendid... Extra fine double mixed Tulips. While these bulbs are not as fine in quality as the named sorts listed above, they are nevertheless the finest mixture it is possible to obtain. We have discontinued all lesser grades as being untrustworthy. \$47.00 per 1000.....	1.15	8.00

ELLIOTT'S HAND MADE MIXTURE OF DOUBLE EARLY TULIPS

Each Mixture Guaranteed to Contain 10 Distinct Varieties

All Named Above

25 for \$1.65

50 for \$3.10

100 for \$6.00

500 for \$28.75

1000 for \$55.00

The Rainbow Glory Collection

Order Now - Pay Next Fall

SOLD WITH A MONEY-BACK BOND

FREE Snapdragon Seeds

SOONER or later you will want some Double Early Tulips for your April Garden. To help you turn this "sooner or later" into NOW, we have designed this fine, strong, vivid Rainbow Glory Collection. The Double Early Tulip is quite different. This species is full of rugged strength and sturdiness. Also, it stays in bloom longer. Its full double flower is solid and multi-petaled; when in full bloom it resembles a peony.

IMPERATOR RUBRORUM . Finest Scarlet Double Tulip
 MYSTERY OF INDIA . Exquisite Terra Cotta with Bronze and Rose
 MR. VAN DER HOEF . The Finest Yellow Double Tulip
 PEACH BLOSSOM . The Finest dark Pink Double Tulip
 TOREADOR . The Finest Red and Yellow Double Tulip

Bargain Prices

25 Bulbs (5 ea.) Reg. Price \$ 2.50. Special Price \$2.30
 50 Bulbs (10 ea.) Reg. Price \$ 5.00. Special Price \$4.50
 100 Bulbs (20 ea.) Reg. Price \$10.00. Special Price \$8.75

These collections must be ordered as stated—we cannot make changes or substitutions.

FREE Flower Seeds

WITH every order for this collection, we will give free a liberal supply of Snapdragon Seeds; sufficient to beautifully fill the space after your Tulips have gone. This is a superb Giant Snapdragon, a beautiful landscape creation. It has long, graceful spikes on which are clusters of closely placed, lovely flowers, excellent for cutting. The colors we will send are an attractive blend: Copper King (Velvety Copper-Scarlet) and Amber Queen (Amber Suffused Chamois).

The Narcissus (Daffodil) Pictured on the Cover

A Bargain in Beauty The Emperor Narcissus

For the Garden in Spring - For Indoors in Winter

FREE Phlox Seeds

Order Now - Pay Next Fall - Sold with a Money-Back Bond

THE appeal of the Narcissus is in its gentle, dainty beauty; a beauty that is expressed in its every detail. The Emperor is one of the largest and finest varieties. Its trumpet is a Deep Golden Yellow, its perianth (wings or petals) an exquisite primrose.

For the spring outdoor garden, and for winter blooming in the house, the Emperor is ideal. It is easy to grow and does exceedingly well in almost any location, shady or sunny, or in moist or dry ground.

Emperor Narcissus are a permanent investment in ever-increasing beauty and value; for the bulbs increase in number and produce more beautiful flowers, year after year. So these advantages, coupled with our Bargain Price and our Free Seed Offer make this an irresistible opportunity.

Bargain Prices

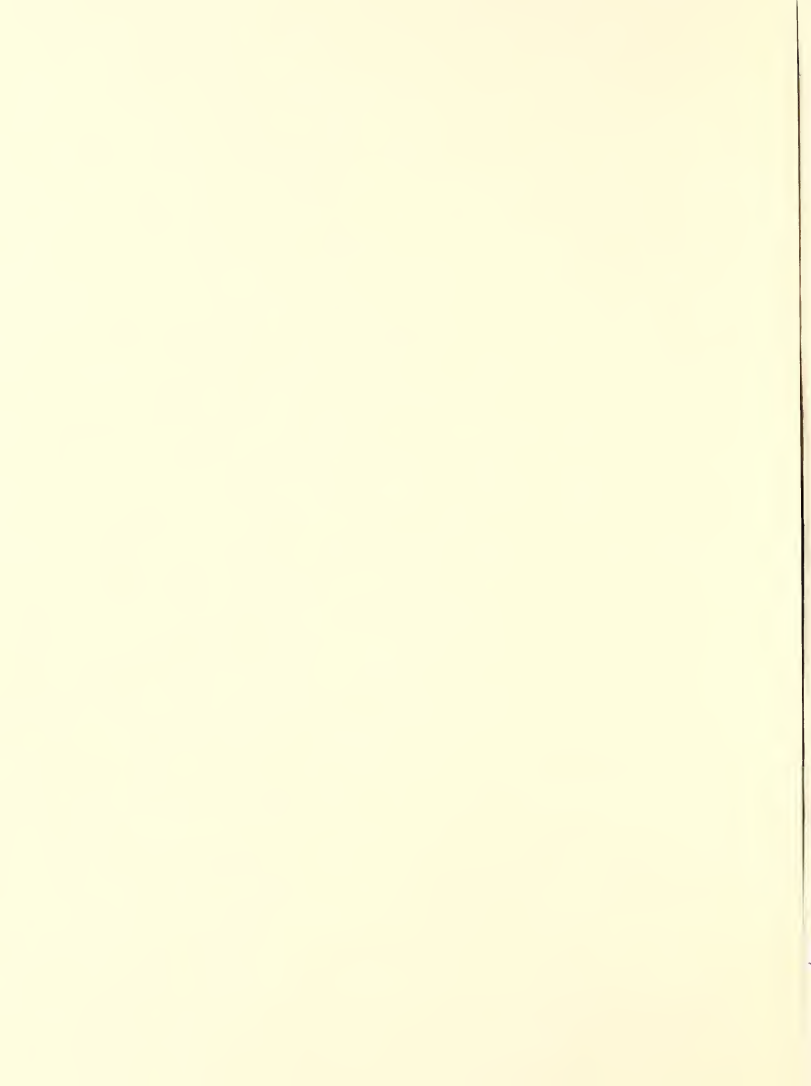
12 Bulbs (Reg. Price \$ 3.00)—Special Price \$ 2.75 Delivered
 100 Bulbs (Reg. Price \$21.00)—Special Price \$19.00 Delivered

These collections must be ordered as stated; we cannot make changes or substitutions.

FREE Flower Seeds

WITH every order, we will include, free of cost, a liberal packet of Annual Phlox Seeds (Drummond's Grandiflora). This brilliantly colored annual will give a rich abundance of flowers throughout the summer. The supply we will send you will be a mixture containing crimson, lilac, primrose, scarlet, white, violet and flesh.

The Elliott Money Back Bond Protects You



Fragrant Narcissus in the House All Winter

Your Money Back If They Do Not Grow

Order Now~Pay Next Fall



FRAGRANT PAPER WHITE NARCISSUS
(Grown in Pebbles)

Guaranteed if Bulbs Are Planted After Thanksgiving

LARGE clusters of snow-white, daintily shaped flowers, very fragrant. For indoor growing only, except in the Far South. No soil needed. Plant bulbs in bowls using ordinary pebbles and a little water.

PICTURE these beautiful Narcissus in your home, flowering from Christmas until spring. Imagine them in your living room, over the fireplace, on the dining table and in the children's bed room. Contemplate the pleasure it would bring to a sick friend to receive a gift of these fresh, live, growing, beautiful and fragrant flowers.

Fragrant Paper White Narcissus

EVERYONE who likes growing things feels the need of flowers when winter comes. That is why people are so willing to pay high prices to florists. Many who have tried to grow plants indoors have given up, because of poor or indifferent results. For satisfactory success, some plants require much care, and expert knowledge. Others cannot be made to grow at all indoors. But the Paper White Narcissus cannot fail.

Experience Unnecessary for Abundant Success

THOUGH you have never watered a blade of grass or planted a single seed, or cared for a single plant, the Paper White Narcissus will grow for you. Or, rather, it will grow without you. All that is needed is the bulbs, a bowl, some pebbles, a little water, and no attention whatever.

Order Now~ Pay Next Fall

*Sold With A Money-Back Bond
if Planted after Thanksgiving*

EVERY statement made here is substantiated by our Money Back Guarantee. If these bulbs do not live up to our representations, your money will be refunded. We make just one condition: *the bulbs must be planted after Thanksgiving*. So you do not take a single risk. The bulbs will be delivered next fall, and payment will not be required until then. Send your Order NOW, today, so that you can enjoy the beauty and fragrance of these Narcissus from Christmas on, all through the winter.

Prices

12 Extra Selected Bulbs \$1.10
100 Extra Selected Bulbs \$7.50
500 Extra Selected Bulbs \$36.25

ELLIOTT NURSERY CO. ~ 505 Magee Bldg., Pittsburgh, Pa.

Rare and Exclusive Triumph Tulips

(FLOWER IN LATE APRIL)

THIS is the founder of a new race of Tulips, and a smashing victory for a group of great Dutch Hybridists. It is the result of many years' careful development. For many years, this—The TRIUMPH—will not be available for general use.

Eventually, this variety will supplant the Darwin in popularity, but for a long time it will be Rare and Exclusive. Here are its advantages: it has the virility,

the form and the substance of the Darwin, but blooms five or six weeks earlier. Though an early bloomer, it has the giant size and long stems of the late varieties. It is easily forced. Because of its newness and rarity, the color range is limited; its colors, though, are unusually beautiful, especially for house decoration.

For best effects allow five bulbs for each square foot to be planted.

TRIUMPH TULIPS

	Per Doz.	Per 100
Acral. Soft lilac, with white edges on outer petals, pointed flower. \$0.20 each	\$2.00	\$15.00
Albany. Petunia lilac, changing to mauve, feathered white, medium sized flower, elegant shape. \$0.20 each	2.00	15.00
Astoria. Cream white, with broad edge of deep cherry rose, large flower, strong stem. \$0.25 each	2.50	18.00
Georgia. Cream white flower with a margin of deep carmine toward the edges of the petals. \$0.25 each	2.50	18.00
Hydrus. Old rose, changing into a golden edge on outer petals; inside gold, fine regular shape. \$0.20 each	2.00	15.00

	Per Doz.	Per 100
Lord Carnavon. Light pink with white edges, white base; pointed flower on tall stem. \$0.20 each	\$2.00	\$15.00
Memphis. Deep rose, margined sulphur yellow, cream white base, very unusual coloring. \$0.20 each	2.00	15.00
Missouri. Deep, glossy wine red, large flower \$0.15 each	1.50	10.00
Ohio. Carmine red, shaded violet purple, white base; large loose flower of very attractive coloring. \$0.20 each	2.00	15.00
Prof. Tendeloo. Deep amaranth red, shaded purple with broad margin of deep citron yellow, large flower. \$0.30 each	3.00	20.00



PARROT TULIP FANTASY

5% Discount for Cash with Order

The Gorgeous Parrot Tulips

All the Vividness of the Tropics

(FLOWER IN MAY)

DO you seek the unusual, the startling, the dramatic? Would you like flowers that are so completely different from all other flowers—so strange—that they will provoke the startled admiration of your friends? Then plant some Parrot Tulips. Their gorgeous, lavish tropical colors are in large splashes. Their weird, fantastic shapes are unlike any other flower. The new "Fantasy" is unquestionably the world's most Gorgeous Tulip.

For best effects allow five bulbs for each square foot to be planted.

	Per Doz.	Per 100
Admiral of Constantinople. Fine red	\$0 70	\$4 75
Cafe Brun. Brown and yellow stripe	70	4 75
FANTASY. The marvelous pink Parrot tulip. A sport of Clara Butt with the same base color, height, strong stem and time of flowering. It has, in addition, encrusta- tions of apple green on the backs of the petals which are lacinated in the charac- teristic manner of the Parrot tulips.		
\$1 20 each	13 75	

	Per Doz.	Per 100
Lutea Major. Yellow; very fine free-bloom- ing	\$0 70	\$4 75
Markgraaf von Baden. True, orange-striped scarlet; extra fine70	4 75
Perfecta. Yellow and scarlet; large flower..	.70	4 75
Rubra Major. The finest red of all75	5 00
Fine Mixed. \$43 50 per 1000	70	4 75

Late Show Tulips

The Tulip of Romance and History

(FLOWER IN LATE MAY)

WHEN Knighthood Was in Flower, this tulip grew in the Queen's garden. It comes down to us from before the days of the Tudors. For centuries this was the only kind that grew; you could get no others. In Colonial days, the colonists who came to America,

brought bulbs like these to gladden their pioneer homes. They are stately and desirable, and are exactly right in the garden that surrounds a house of formal architecture.

For best effects allow five bulbs for each square foot to be planted.

	Per Doz.	Per 100
Absalom (Bizards). Orange, feathered brown and yellow, very tall	\$1 25	\$9 00
Amphion (Bybloems). Violet, brown and white, very unusual	1 75	12 00
Apollo (Rembrandt). Lilac rose and white, striped dark carmine	1 15	8 00
Athalia (Bybloems). White, bordered and feathered rose	1 25	9 00
Black Boy (Bizards). Dark brown with gold and gray feathered black	1 10	7 50
Duke of Montrose (Bizards). Bronze, feath- ered golden yellow	1 15	8 00
Fancy (Bizards). Yellow, flamed brown ..	1 75	12 00
Glory of Holland (Bybloems). Pure white, bordered and feathered violet	1 50	10 00
Le Duel (Bizards). Bright yellow, feathered dark brown, very beautiful	1 60	11 00
Le Printemps (Rembrandt). Lilac and white, flamed dark red	1 15	8 00
Marco Spads (Rembrandt). White, flamed fiery red	1 20	8 50
Ponceau Transparent (Bybloems). Beautiful rose-red, striped white	1 60	11 00
Procles (Rembrandt). Violet flamed black and white	1 15	8 00
Quasimodo (Rembrandt). White feathered carmine	1 15	8 00
Red Prince (Rembrandt). Rose, flamed fiery red	1 15	8 00

	Per Doz.	Per 100
Reine de Holland (Bybloems). Dark red and white	\$1 75	\$12 00
Romeo (Bizards). Yellow, feathered and bor- dered orange red	1 15	8 00
Vondel (Bybloems). Dark violet-blue, feath- ered white	1 75	12 00

LATE SHOW TULIP COLLECTIONS

Bizarres. Red, on yellow ground, choice mixed varieties	85	6 00
100 bulbs, in 10 named varieties—not less than 100 bulbs supplied		7 50
Bybloems. Red on white ground. Choicest mixed	1 15	8 00
100 bulbs, in 10 named varieties—not less than 100 bulbs supplied		8 50
Rembrandt Tulips. Fine mixed. Rembrandt Tulips are Darwin Tulips, but very queer- ly striped and feathered	1 00	7 00
100 Rembrandt Tulips in 20 named varieties (not less than 100 furnished)		8 00
Violettes. Violet, on white ground. Choicest mixed	1 10	7 50
100 bulbs, in 10 varieties—not less than 100 bulbs supplied		8 50

DOUBLE LATE TULIPS

Blue Celeste (Blue Flag). Soft violet-blue.	1 50	10 00
Yellow Rose. Yellow, sweet-scented90	6 50
Pensee Rose. Salmon-pink. \$0.50 each ..	5 50	

Carriage Prepaid on Every Bulb Order in the United States



NATURALIZED PLANTING OF THE POET'S NARCISS

Elliott's Bonded Narcissus

Northwestern Grown

IT is with great pleasure and satisfaction that we announce that we can now offer our Narcissus with every assurance that they will give abundant satisfaction. And we unhesitatingly back this statement with the Elliott Money-Back Guarantee.

Some years ago, the government prohibited the importation of Narcissus. This threw upon American growers the task of developing their own bulbs. Extensive and conclusive experiments proved that the only worth while bulbs were those grown in the Northwest. Narcissus bulbs developed in other than a

climate which has long, cool, moist springs, are unreliable and unsatisfactory.

You can pin your faith to Elliott's Narcissus. Every bulb is guaranteed to be Northwestern Grown, sturdy, healthy, and virile; they are every bit as good as the finest Holland bulbs.

So, once again you can have this exquisitely lovely flower at its very best. Plant them in your rocky and among your perennials, also at the edge of your shrubbery. They will last indefinitely and will bloom year after year.

All Elliott Narcissus will grow indoors during the winter months.

SINGLE NARCISS

(Trumpet Daffodils)

	Per Doz.	Per 100
Empress. White perianth of great substance; trumpet rich chrome-yellow. Showy for border or naturalizing. Does equally well forced. Height 18 inches.	\$2.50	\$18.00
Bicolor Glory of Sassenheim. White perianth; large, deep yellow trumpet	2.75	20.00
Bicolor Oliver Cromwell. White perianth; large, broad, yellow trumpet. Very free flowering. \$0.50 each	5.00	38.00
BICOLOR SPRING GLORY. Clear white perianth; long chrome-yellow trumpet with reflexed brim	2.75	20.00

Per Doz. Per 100

Bicolor Victoria. Creamy white perianth; bold, rich yellow trumpet. A flower of great substance which keeps well	\$2.50	\$18.00
Cleopatra. Very broad yellow imbricated perianth and long, bold, deep yellow trumpet. A splendid large flower which will take the place of Emperor in the future. \$0.50 each	5.00	38.00
EMPEROR. Perianth dark primrose; trumpet deep yellow. Large flower on strong stem	2.75	19.00
Golden Spur. Perianth and trumpet rich golden yellow. Free flowering	2.25	15.00

Carriage Prepaid on Every Bulb Order in the United States



NARCISSI KING ALFRED



NARCISSI GOLDEN SPUR



NARCISSI CLEOPATRA

KING ALFRED. Large, bold golden yellow flower with deeply frilled mouth; elegantly recurved; broad, well formed perianth. One of the best daffodils and of lasting quality \$3.50 \$25.00

Madame De Graaf. Perianth white; trumpet pale primrose passing to white 2.75 20.00

Minister Talma. Yellow perianth, golden yellow trumpet. A good grower and free flowering variety, producing large, erect flowers of great substance. Forces very early 2.75 20.00

Mrs. Ernst H. Krelage. Broad, well closed perianth; long, creamy white trumpet with elegant recurved mouth. A beautiful white Daffodil. \$1.00 each 11.00

Per Doz. Per 100

Princeps. Pale sulphur yellow perianth, yellow trumpet \$2.00 \$15.00

Thackeray. Golden yellow perianth and trumpet. Large flower. Improved King Alfred. \$2.00 each 22.00

The First. A very bold flower with yellow perianth and golden yellow trumpet on very tall stem. Earliest of all narcissi. \$2.00 each 22.00

Tresserve. Sulphur yellow perianth, large yellow trumpet. An enormous flower being a hybrid of Emperor and Golden Spur and having the good qualities of both 3.50 26.00

VAN WAVEREN'S GIANT. Sulphur yellow perianth; trumpet bright yellow. Very large flower. \$0.60 each 6.00

Per Doz. Per 100

BARRI NARCISSI

For best effects allow five bulbs for each square foot to be planted

Per Doz. Per 100



NARCISSI EMPEROR

Bonfire. Soft yellow, fiery-red bordered crown; white perianth of perfect shape. A very striking variety. \$0.50 each. \$5.00

Conspicuous. Pale yellow perianth, broad, short crown, edged orange scarlet 1.75 \$12.00

Masterpiece. Perfectly shaped white perianth; flat spreading brilliant orange scarlet crown. Most attractive. 2.75 20.00

Red Chief. Broad, pure white and well imbricated perianth; big, flat, deep red, crown with broad margin of fiery orange red; prettily fimbriated at edge 3.00 22.00

SEAGULL. Large spreading snow white perianth; canary yellow crown with orange edge 2.50 18.00



NARCISSI BARRI SEAGULL

This is the beautiful Narcissus (Daffodil) pictured in exact color on the cover of this book. See special offer on page 27.

Why Pay Big Prices to Florists?

INCOMPARABILIS NARCISSI

For best effects allow four bulbs for each square foot to be planted

Per Doz. Per 100

- Bernardino.** A very elegant flower with large, well-closed cream-white perianth and large richly frilled cup of soft yellow with deep orange-apricot colored rim. Very vigorous \$3.00 \$22.00
- Croesus.** A very large, flat orange cup against a slightly reflexed perianth of creamy white with a tinge of lemon yellow makes this variety one of the most attractive and striking of the daffodils. Extra show variety. \$1.50 each 15 00
- Great Warley.** Pure white perianth, 5 inches in diameter; bold, large lemon yellow cup, measuring two inches across. Remarkably striking flower. The largest of this class. Very beautiful. \$1.00 each. 10.00
- Homespun.** Perianth and cup of a soft primrose yellow. Perfectly shaped flower of good substance. Very distinct and exceedingly beautiful 2.75 20 00
- LUCIFER.** Large star-shaped white perianth and glowing orange red cup 2.25 15 00
- SIR WATKIN.** Broad, well shaped sulphur perianth; deep yellow cup 2 50 18 00

NARCISSI JONQUILS

For best effects allow seven bulbs for each square foot to be planted

Per Doz. Per 100

- Campernelle Rugulosus.** Golden yellow, sweet scented. Free flowering \$1.60 \$11.00
- Golden Scepter.** Deep golden yellow flowers of great substance. Reminds one of a trumpet daffodil for the size of the flower and its strong stem. Free flowering. Very handsome 2.75 20.00

LEEDSI NARCISSI

For best effects allow five bulbs for each square foot to be planted

Per Doz. Per 100

- Mount Erebus.** Broad, well closed pure white perianth; ivory white cup. One of the largest of the Giant Leeds type and of enormous substance. \$0.35 each \$3.50 \$25.00
- Queen of the North.** Broad white perianth; light primrose cup which changes into ivory white as the flower ages. An exquisite flower 2 50 18.00
- WHITE LADY.** White, fine shaped perianth; light sulphur yellow cup. Beautiful flower on very tall stem 2 25 15.00

NARCISSI SIR WATKIN
GROWING IN THE NORTHWEST

NARCISSI LUCIFER



NARCISSI LEEDSI WHITE LADY

After July 1 Will Be Too Late; Order NOW

POETAZ NARCISSI

	to be planted	
	Per Doz.	Per 100
Aspacia. Perianths pure white, yellow eyes. Double nosed bulbs	\$2.00	\$15.00
ELVIRA. Pure white perianths, golden yellow eyes. Several good-sized flowers of great substance on long stem	2.00	15.00
Irene. Sulphur yellow perianths; orange eyes; beautiful in every way	2.75	20.00
Lawrence Koster. Pure white perianths; yellow eyes ..	2.25	15.00
Orange Cup. Deep yellow perianths; nicely curved and well imbricated orange cups. Six to eight flowers per stem. An exceptionally beautiful color combination. A remarkable and very beautiful variety	2.50	18.00

POLYANTHUS NARCISSUS

	Per Doz. Per 100	
Grand Soleil D'Or. Yellow perianths, orange eyes. The well known yellow polyanthus, which used to be imported from France. Free flowering. Forces early	\$2.50	\$18.00
PAPER WHITE GRANDIFLORA. Clusters of fragrant white flowers; fine for forcing, can be grown in pebbles and water and had in bloom for Christmas.		
Select Bulbs; 13-14 centimeters	1.00	7.00
Extra Select Bulbs; 14-15 centimeters	1.10	7.50

POETICUS NARCISSI

	to be planted	
	Per Doz.	Per 100
Cassandra. Broad, snow-white, well formed perianth; small flat scarlet cup. Very beautiful flower on strong stem.	\$3.00	\$22.00
Glory of Lisse. Fine, round, snow-white perianth; cup yellow with scarlet rim	2.25	15.00
Laureate. Large, pure white, well closed perianth; large, flat, yellow cup with scarlet rim. Improved Ornatius	3.00	22.00
ORNATUS. Fine round perianth, pure white; cup yellow, margined scarlet	1.75	12.00
Recurvis (Pheasant's Eye). White, pointy petals; cup orange-red with yellow and green. The best for cutting and naturalizing. Later than Ornatius. Not good for forcing	1.30	9.50

ORCHID NARCISSI

	Per Doz.
Thalia. An exquisite flower of unusually pleasant appearance, with three or four pure white flowers on one stem. This variety forms a class by its own. Because of the great resemblance with an orchid it is known as the Orchid Narcissi. \$1.25 each... ..	\$13.75

DOUBLE NARCISSI

	to be planted	
	Per Doz.	Per 100
Albo Pleno Odorato. Double, snow-white, sweet-scented, Gardenia shaped flower. A very good variety for cutting. Not good for forcing.	\$2.50	\$18.00
Argent. Semi-double, a star-shaped flower with white petals and yellow and white center. Beautiful flower, splendid; free flowering and hardy	2.50	18.00
Double Incomparable. Golden yellow and orange. Double nosed bulbs.	2.25	15.00
Orange Phoenix. Creamy white and bright orange. Beautiful	3.00	22.00
Sulphur Phoenix. Creamy-white	2.75	20.00
The Pearl. Creamy-white; very elegant flower	2.75	20.00
Van Sion. Golden yellow, large flower on strong, erect stem. One of the best for early forcing. Also good for naturalizing	2.50	18.00



NARCISSI POETAZ ELVIRA



NARCISSI GRAND SOLEIL D'OR



POET'S NARCISSI

Carriage Prepaid on Every Bulb Order in the United States



The Lovely Hyacinth

(FLOWERS IN APRIL)

DELICIOUSLY scented, delicately beautiful in every detail, quietly refined and formal in shape and color, the graceful, dignified Hyacinth has a winning allure to those who are attracted to the elegance of simplicity.

To such people, spring would not be spring without their beauty spots of hyacinths. It is significant that children love them, and that millions of Hyacinths find themselves on the altars of churches.

Study the photographs of Elliott's choice Hyacinths, then read the descriptions of our many varie-

ties. For your garden there are virginal whites of many kinds . . . azure-blue, porcelain blue, deep dark blue, and blue touched with violet . . . yellows that range from orange to creamy-white . . . reds from dainty pink, through carmine, to ruby violet . . . But read the descriptions, select your choice and send your order. You will never regret growing these beautiful, fragrant flowers. Every Elliott Hyacinth can be grown indoors during winter. For best effects plant four bulbs per square foot.

First Size Named Hyacinths

"TOP ROOT, EXHIBITION MOTHER BULBS"

25 or more Hyacinths of one variety will be supplied at the hundred rate

	Each	Doz.	100
Alaska. The best of the newer pure white Hyacinths	\$0.25	\$2.70	\$20.00
Albertine. Pure white; early; large spike; extra fine	.25	2.70	20.00
Arentine Arentsen. New. Pure white. Very early; very attractive	.25	2.70	20.00
Baron Van Thuyll. Very fine pink; extra large spike	.25	2.70	20.00
Baronesse Van Thuyll. Early; pure white	.25	2.70	20.00

	Each	Doz.	100
Beauty. Tender; lovely pink, rather small flower, but color unsurpassed	\$0.30	\$3.00	\$22.00
Bismarck. Flowers bright blue shaded violet in center of the petals. Specially recommended for early forcing	.30	3.00	22.00
British Queen. New. Pure white; extra fine	.25	2.70	20.00
BUFF BEAUTY. Buff or orange-yellow large truss	.25	2.70	20.00
Cardinal Wiseman. Soft rose, carmine-striped; very large truss	.25	2.70	20.00
Captain Boynton. Azure-blue; large spike	.25	2.70	20.00
Charles Dickens. Large; dark lilac; splendid	.25	2.70	20.00

Order Now—Pay Next Fall

	Each	Doz.	100
City of Haarlem. Soft yellow, large truss, well filled with bells. The best of the yellow Hyacinths . . .	\$0.25	\$2.70	\$20.00
Correggio. Purest white. A magnificent truss filled with large bells of excellent substance. One of the finest exhibition varieties30	3.00	22.00
Czar Peter. Porcelain-lilac25	2.70	20.00
Daylight Orange-yellow; best variety of its color25	2.70	20.00
Electra. Light, silvery blue; splendid for forcing25	2.70	20.00
ENCHANTRESS. Clear light blue; one of the finest of its color; extra fine spike. Exhibition variety25	2.70	20.00
Garibaldi. Brilliant red; fine for early forcing25	2.70	20.00
General Pelissier. Deep scarlet; early; extra fine25	2.70	20.00
GENERAL DE WET. (Pink Sport of Grand Maitre.) Lovely soft pink, very large truss well filled with fine bells. A splendid variety for forcing and bedding30	3.00	22.00
General Vetter. Blush white, loose spike; one of the very best25	2.70	20.00
Gertrude. Deep carmine rose. A very large well filled truss of a fine color. Excellent for forcing and bedding25	2.70	20.00
Gigantea. Blush; splendid truss25	2.70	20.00
Grandeur a Merveille. Rosy blush. A very dainty color and one of the most beautiful varieties25	2.70	20.00
Grande Blanche. Lovely blush-white. Excellent spike and bells25	2.70	20.00
Grand Lilas. Azure-blue; perfect spike	.25	2.70	20.00
Grand Maitre. Beautiful porcelain-blue; gigantic truss filled with fine bells. Extra strong stem. One of the finest of the lighter blue Hyacinths for all purposes25	2.70	20.00
Hein Roozen. Magnificent, snowy-white truss. Extra long; loosely formed and very elegant. A grand variety.25	2.70	20.00
Jacques. Broad, loose spike, extra long; blush25	2.70	20.00
KING OF THE BLUES. Finest dark blue; truss and bells of fine form and excellent color. The best dark blue of the Hyacinths.25	2.70	20.00
King of Holland. Orange-yellow25	2.70	20.00
King of the Yellows. Fine, bright yellow; grand spike.25	2.70	20.00
Kohinoor. Extra large truss; bright pink; one of the largest flowers; semi-double.25	2.70	20.00
LA VICTOIRE. Brilliant carmine-red; one of the very finest red varieties for bedding and forcing. It retains its superb color to the end.25	2.70	20.00
Lady Derby. Beautiful pure rose-pink. Extra large truss filled with large bells. A very fine variety for bedding as it has a strong stem to support the heavy truss. A good forcer.25	2.70	20.00



HYACINTH ENCHANTRESS

	Each	Doz.	100
LA GRANDESE. Purest white; extra fine; best of all whites.	\$0.25	\$2.70	\$20.00
La Peyrouse. Clear blue.25	2.70	20.00
L'Esperance. Dark purple; best of the purples.30	3.00	22.00
L'Innocence. Pure white. Extra fine truss with very large bells. A wonderful variety for forcing.25	2.70	20.00

	Each	Doz.	100		Each	Doz.	100
LORD BALFOUR. Lilac, tinged deep violet with a rosy reflex. A very fine truss with large bells and of a very distinct color. The best variety of this class.	\$0.30	\$3.00	\$22.00	Marie Cornelia. Light pink; earliest of all.	\$0.25	\$2.70	\$20.00
Mad. Van Der Hoop. Pure white; splendid.25	2.70	20.00	Menlik. New. Almost black; best of its color; large truss.25	2.70	20.00
Mansfield. Ruby-violet; splendid truss best of its color.25	2.70	20.00	Moreno. Fine pink; extra large spike; very early; splendid sort.25	2.70	20.00
Marconi. Deep rose flushed white. Compact spike of fine shape on a very stout stem. Excellent for out of doors.25	2.70	20.00	Mr. Plimsol. Ivory-white; large spike.25	2.70	20.00
Marie. Rich purple and indigo; enormous spike.25	2.70	20.00	Myosotis. The best of the newer porcelain blue Hyacinths.30	3.00	22.00
				Nigger Boy. Very dark blue.25	2.70	20.00
				Ornament Rose. Fine pink; large truss.25	2.70	20.00
				PANAMA. Beautiful rose pink with heavy trusses and a strong stem. A decided improvement over Lady Derby.30	3.00	22.00
				Perle Brilliante. Light blue. Very large spike; fine.25	2.70	20.00
				Prince of the Netherlands. A beautiful pink sport of "Lord Balfour," which retains all the good qualities of its parent.25	2.70	20.00
				QUEEN OF THE BLUES. Lovely sky-blue with silvery reflex. One of the very finest of all the light blue Hyacinths. A gem for bedding and pot culture.25	2.70	20.00
				QUEEN OF THE PINKS. (A Sport of King of The Blues). Clear rose pink. Large well-filled truss of excellent color and substance. One of the bedding varieties.25	2.70	20.00
				Queen of the Whites. Huge pure white truss. A fine exhibition of variety.30	3.00	22.00
				Queen Wilhelmina. Vivid rosy-pink. Extra large truss with well shaped bells. An elegant variety.25	2.70	20.00
				Regulus. Light blue with dark stripes.25	2.70	20.00
				Roi Des Belges. Extra fine; bright scarlet; extra large spike.25	2.70	20.00
				ROSEA MAXIMA. Lovely delicate rose. Splendid spike. A fine variety for all purposes.25	2.70	20.00
				Schotel. Light blue; perfect truss.25	2.70	20.00
				White Lady. Pure white, broad spike; very fine.25	2.70	20.00
				WILLETTE. Soft, pearly lavender. An unusual color and of exquisite beauty. Truss very large, on a stout stem. One of the finest of the newer varieties.25	2.70	20.00
				William The First. Brilliant carmine.25	2.70	20.00
				Yellow Hammer. Compact spike of a lovely creamy-yellow. Excellent for pot culture.25	2.70	20.00



HYACINTH LAVICTOIRE

When you put an Elliott Bulb into the ground, you know exactly the kind of flower it will bring forth. You know when it will bloom, and how it will bloom. Yet Elliott Bulbs cost less than unpedigreed, nondescript ones. It pays to deal with Elliott; you get more beauty at less cost.

Full Cultural Directions with Every Order

Single Mixed Hyacinths

A Real "Buy"

FOR those who want a real flower at little cost, Elliott's Single Mixed Hyacinths are impossible to beat. Considering their price, these are really unusual bulbs, and while they should never be forced, you will find it pretty hard to stop their growth if you plant them outside. We anticipate a heavy demand for this bulb this season.

	Per Doz.	Per 100
Red and Dark Red	\$1.60	\$11.00
Blush White	1.60	11.00
Pink	1.60	11.00
Pure White	1.60	11.00
Dark Blue and Purple	1.60	11.00
Light Blue	1.60	11.00
Yellow	1.60	11.00
All Colors, Mixed	1.60	11.00

Miniature Hyacinths for Indoor Growing

LONG experience has convinced most garden lovers that Roman Hyacinths are much too high priced for their mediocre quality. Instead experienced planters are using the Single Small Forcing Hyacinth with results that are highly gratifying. Costing *less than half the price of Roman*, they give a flower of about the same size with larger bells and a *great deal more strength*. We are offering in this section only those varieties which produce the finest flowers and *force easily*, blooming early in January. This bulb was one of our best sellers last year.

MINIATURE HYACINTHS FOR FORCING

	Per Doz.	Per 100
Dark Red	\$1.20	\$8.50
Pink	1.20	8.50
Pure White	1.20	8.50
Cream White	1.20	8.50
Dark Blue	1.20	8.50
Light Blue	1.20	8.50
All Colors, Mixed	1.20	8.50



HYACINTH ROSEA MAXIMA

PLANT more bulbs in your garden, for bulbs produce the most beautiful flowers. They require no skill and little care. Tulip Bulbs will bloom each year for 3 years; Hyacinth Bulbs can be replanted for years; Narcissus Bulbs live for many years and will increase in number and in the beauty of their blooms year after year. You can pin your faith to Elliott Bulbs, they are sold with A Money Back Guarantee.

Carriage Prepaid on Every Bulb Order in the United States



Elliott's Superb Bedding Hyacinths

THESE special Bedding Hyacinths are selected for uniformity in color, height and time of bloom and are specially packed for those who require a higher grade bulb and can be furnished in a mixture. They may be used for formal garden planting with every assurance that when they are in bloom, the design will not be ruined by having flowers of unequal height, differences in blooming time, weak stems or color clashes.

	Per Doz.	Per 100
Dark Red	\$1.75	\$12.00
Pink	1.75	12.00
Pure White	1.75	12.00
Blush White	1.75	12.00
Dark Blue	1.75	12.00
Light Blue	1.75	12.00
Yellow	1.75	12.00

5% Discount for Cash with Order

Special Varieties Illustrated in Color On Opposite Page →

Per Doz. Per 100

No. 1 — Vulcain (Breeder). Reddish apricot with broad margin of bright buff yellow, inside darker. Beautifully shaped flower in a color unlike any other.	\$1.50	\$10.00
No. 2 — Bacchus (Breeder). Darkest blue with deep violet brown. The finest of the dark blue Breeder Tulips.	1.75	12.00
No. 3 — Princess Elizabeth (Darwin). A long flower of the deepest pink, splendid for breeding.85	6.00
No. 4 — Madras (Breeder). Splendid dark bronze.85	6.00
No. 5 — Eclipse (Darwin). The finest deep red Darwin Tulip.	2.75	21.00

Special Offers of Varieties Illustrated in Color On Opposite Page →

Collection No. 9 Five bulbs each of the 5 varieties (25 bulbs)	\$2.75
Collection No. 10 Ten bulbs each of the 5 varieties (50 bulbs)	4.90
Collection No. 11 Twenty bulbs each of the 5 varieties (100 bulbs)	9.50
Collection No. 12 Thirty bulbs each of the 5 varieties above (150 bulbs)	13.75



❶
VULCAIN



❷
BACCHUS

PRINCESS
ELIZABETH

❸



❹
MADRAS



❺
ECLIPSE

SPECIAL OFFERS OF THESE BEAUTIFUL TULIPS ON OPPOSITE PAGE



1
SOPHROSYNE

AFTER-
GLOW
3

2
VIKING

4
BLEU AIMABLE

5
APHRODITE



**Special Varieties
Illustrated in Color
← On Opposite Page**

Per Doz. Per 100

No. 1 — Sophrosyne (Darwin). Flesh-colored, rose, bordered silvery white; charming \$1.10 \$7.50

No. 2—Viking (Darwin). Violet with pale lavender edges, A very stately Darwin of exquisite coloring and very large size. Height, 27 inches 1.20 8.50

No. 3 — Afterglow (Darwin). Deep orange suffused with salmon and salmon edge. Large flower of good substance and unusual coloring. Carried on a tall, stately stem. Height, 26 inches.. 1.35 9.50

No. 4—Bleu Aimable (Darwin). Beautiful lilac. Inside violet with white base and blue star. Height, 25 inches.. 1.20 8.50

No. 5 — Aphrodite (Darwin). The finest clear rose tulip 2.25 15.00

**Special Offers of
Varieties Illustrated
in Color**

← On Opposite Page

Collection No. 13
Five bulbs each of the 5 varieties (25 bulbs)..... \$2.50

Collection No. 14
Ten bulbs each of the 5 varieties (50 bulbs)..... 4.85

Collection No. 15
Twenty bulbs each of the 5 varieties (100 bulbs)..... 9.50

Collection No. 16
Thirty bulbs each of the 5 varieties above (150 bulbs) 13.25

Seven Hardy Bulbs

That Flower in March

WHEN the shrubbery is bare, and every landscape is a depressing vista of sombre dreariness . . . when spring is a promise rather than a reality . . . then these seven brave little flowers bring cheer to the winter-weary soul.

Neither snow nor wind, nor rain can deter them from appearing on schedule time. Like mischievous little coquettes, they wave their cheerful colors to you from under the brown shrubbery or over the edge of the rockery.

Plant them once, and year after year they will come up every March to say "Here we are, happy to make you happy!"

For best effects, plant 7 to 9 bulbs to a square foot.

7 Hardy Miscellaneous Bulbs for Naturalizing

CHIONODOXA (Glory of the Snow). Used largely for naturalizing. Very pretty blooms early in April.	Per Doz.	Per 100
Gigantea	\$0.65	\$4.50
Lucillea (\$32.50 per 1000)50	3.50
FRITILLARIA (Crown Imperials). Fine mixed varieties, including double and single flowering sorts. Colors range from light yellow through deep yellow, orange and red. \$0.40 each.....	4.00	30.00
FRITILLARIA MALEAGRIS (Guinea Hen Flower). In mixture excellent for naturalizing.60	4.00
GALANTHUS (Snowdrops).		
Nivalis. Single Snowdrops (\$35.00 per 1000)55	3.75
Nivalis Double, Double Snowdrop.70	5.00
ERANTHUS (Winter Aconite).		
Hyemalis. Excellent for naturalizing and rock work. (\$32.50 per 1000)50	3.50
IXIA. In splendid mixtures. (\$35.00 per 1000).....	.55	3.75
Viridiflora. Excellent.	1.00	7.00
MUSCARI (Grape Hyacinth). Fine for naturalizing and planting. In clumps among perennial borders, etc. Blooms early in April.		
Botryoides. Blue (\$32.50 per 1000)50	3.50
Botryoides Album. White.70	5.00
Heavenly Blue, Bright Sky Blues. The best and largest of the Grape Hyacinths (\$35.00 per 1000)55	3.75
Plumosum (Feather Hyacinth). Violet blue. Spikes often 8 inches long and of perfect pyramid shape. Splendid for general garden use and naturalizing.	1.50	10.00
SCILLA. All the varieties of the Scilla family are splendid for naturalizing. Both from bells like small Hyacinths. They will bloom to perfection in shady places where no other flowers can be made to grow.		
Siberica, Sky Blue. One of the loveliest. Color sky-blue. Flowers outdoors at the same time as the Snowdrops. Fine for planting in the grass.65	4.50
Siberica Alba. The White variety of the above.65	4.50
Campanulata Alba Maxima. Large pure white.65	4.50
Campanulata Blue Queen. Large bright blue.65	4.50
Campanulata Coerulea. Heavenly blue.65	4.50
Campanulata Excelsior. Largest bright blue (late).65	4.50
Campanulata Rosy Queen. Soft lilac rose.70	5.00
Campanulata. In splendid mixture. (\$35.00 per 1000).....	.55	3.75

Carriage Prepaid on Every Bulb Order in the United States



HAVE living, growing flowers in your house through the winter. The cost is low, the culture easy, the results beautiful. And you save the high prices retail florists charge.

WINDOW DECORATION WITH ELLIOTT'S BULBS

Flowering Bulbs for House Culture

Flowers in the House from Christmas until Easter

Provided directions are followed and except where stated otherwise, the Elliott Money-Back Bond applies to all Bulbs for indoor growing.

WITH only such facilities as every home has, and with about as much trouble as it takes to keep the eight-day clock running, one may, by selecting bulbs in the proper classes, have flowers to bloom in the house all winter. The amount of skill required is so little that a twelve-year-old school girl should be able to do it as well as the most experienced professional. The flowers produced are among the finest known to floriculture and you purchase exactly similar flowers all winter in the florists' shops at three times as much as it would cost you to grow them yourself.

If you are a beginner you will, of course, want some Hyacinths, since there is nothing easier to grow. You may use anything in the first sized named Hyacinths (page 36), the Miniature Hyacinths (page 39), or the Special Prepared Dutch Hyacinths

for very early bloom, listed on next page. Equally easy are the Single Early and the Double Early Tulips (Page 26). The Triumph Tulips (Page 30), grow as easily as the Early sorts (Page 23). The Mendel Tulips (Page 25), have been developed specially for forcing and are easiest of all to grow in this way. Then there is the Narcissus (Page 47), which seem almost to grow themselves. There are also the Lily-of-the-Valley and the Calla Lilies which require hardly enough attention to make the experience interesting.

The Freesias are a little more difficult, though still quite simple. The Lilies require some skill and the beginner should prepare himself for some disappointment the first time he attempts to grow them. Among late flowering Tulips the Breeders (Page 11)

Let the Children Plant a Bulb Garden

and the Darwins (Page 6) may be forced but to force them successfully requires real skill. Consequently, unless you are sure of your ability you had better stick to early Tulips and not try the Darwins and Breeders.

For your convenience we are listing below some of the more popular varieties. However, if you prefer others you may make your own selection. Keeping in mind what we have said above, you cannot possibly make a mistake.



HYACINTH GRAND MAITRE



HYACINTH HEAVENLY BLUE

Flowers for Indoor Growing in Winter

PREPARED DUTCH HYACINTHS

(To bloom for Christmas)

In order to prevent confusion in filling orders we have renamed these specially prepared Hyacinths.

	Per Doz.	Per 100
Christmas Red (La Victoire).....	\$2.00	\$15.00
Heavenly Blue (Schotel).....	2.00	15.00
Golden Climax (Yellow Hammer).....	2.00	15.00
Purity (L'Innocence). White.....	2.00	15.00
Rosy Morn (Lady Derby), Pink.....	2.00	15.00
Royal Prince (Dr. Lieber), Purple.....	2.00	15.00
Vesta (Beauty), Pink.....	2.00	15.00

TULIPS Single Early (To bloom in February)

	Per Doz.	Per 100
Couleur Cardinal, Deep Scarlet.....	\$1.10	\$7.50
General de Wet, Orange. \$0.20 each.....	2.00	15.00
Keizerskroon, Red and Yellow.....	1.50	10.00
La Reine Maximus, Blush White.....	1.00	7.00
Mon Tresor, Pure Yellow.....	1.25	9.50
Proserpine, Carmine Rose.....	1.15	8.50

THOUGH winter rages outdoors, your home can be filled with the beauty and fragrance of these flowers. And your home grown plants will make attractive gifts.

HYACINTHS

First or Exhibition Size
(To bloom in February)

	Each	Doz.	100
Buff Beauty, Orange Yellow.....	\$0.25	\$2.70	\$20.00
Gertrude, Carmine Rose.....	.25	2.70	20.00
Gen. Vetter, Blush White.....	.25	2.70	20.00
Grand Maitre, Porcelain Blue.....	.25	2.70	20.00
King of the Blues, Dark Blue.....	.25	2.70	20.00
Lady Derby, Rose Pink.....	.25	2.70	20.00
La Victoire, Carmine Red.....	.25	2.70	20.00
L'Innocence, White.....	.25	2.70	20.00
La Grandesse, White.....	.25	2.70	20.00
Mansfield, Ruby Violet.....	.25	2.70	20.00
Queen of the Blues, Sky Blue.....	.25	2.70	20.00
Yellow Hammer, Cream Yellow.....	.25	2.70	20.00

All Your Money Back if Elliott Disappoints



DOUBLE EARLY TULIP CROWN OF GOLD

Double Early
(To bloom in March)

	Per Doz.	Per 100
Crown of Gold, Yellow	\$1.10	\$7.50
Imperator Rubrorum, Deep Scarlet	1.20	8.50
Murillo, Pink75	5.50
Peach Blossom, Rosy Pink	1.10	8.00
Schoonoord, Pure White85	6.00
Tea Rose, Apricot Yellow85	6.00

LILY-OF-THE-VALLEY

	Per 25	Per 100
Extra Selected Pips. Ready in December. For forcing (American pips will not force)	\$2.00	\$7.50



FREESIA PURITY



LILY-OF-THE-VALLEY

CALLA LILIES

	Each	Doz.	100
White Calla (Richardia Aethiopica). The White Calla, or Lily of the Nile, is a well known plant of easy culture, and in Winter is one of our best window plants. To aid profuse blooming keep them dormant from the middle of June until the last of August; replot in good, rich soil, using 6 to 8 inch pot; give water, light and heat in abundance, and the result will be most satisfactory.			
Selected Bulbs	\$0.25	\$2.50	\$18.00
Extra Selected Bulbs30	3.25	24.00
Yellow Calla (Elliottiana). The flowers are a magnificent deep golden yellow and the green foliage is spotted creamy white. Unquestionably the most beautiful of the Calla Lilies.			
Select Bulbs30	3.00	20.00
Extra Select Bulbs45	4.50	30.00

FREESIA PURITY

	Doz.	100	1000
This charming flower is one of the most satisfactory bulbs that can be forced. It is certain to flower either in the conservatory or the house.			
Selected Bulbs, 1/2 to 3/8 inch30	2.25	20.00
Mammoth Bulbs, Extra 3/8 to 3/4 inch50	3.75	33.75

RAINBOW, Fardel's Strain. A wonderfully improved stock of colored Freesia, comprising a large number of beautiful shades of yellow, blue, mauve, pink, lavender, etc. The flowers are as large as the best white type, and equally as fragrant. We offer them in mixed colors only.

Doz.	.75	100	\$5.50	1000	\$49.00
------	-----	-----	--------	------	---------

Carriage Prepaid on Every Shipment in the United States

NAMED FREESIAS IN SEPARATE COLORS

	Doz.	100
Buttercup, Splendid Yellow	\$0.85	\$6.00
California, Very Best Yellow	1.15	8.00
New Giant, Very Finest Lavender.....	1.10	7.50
Splendens, Beautiful Lavender75	5.50

LILIU FORMOSUM

Formosum, Japanese Easter Lily. Excellent for forcing or planting outdoors. Large, white, trumpet-shaped blooms.

	Each	Doz.	100
7 to 9 inches	\$0.30	\$3.00	\$20.00
9 to 10 inches40	4.00	30.00

These bulbs require expert care; our Money Back Guarantee does not apply on them.

LILIU HARRISII

(True Bermuda Easter Lily)

These bulbs require expert care; our Money Back Guarantee does not apply on them.

These Lilies are suitable for growing in greenhouse only

	Each	Doz.	100
Bulbs 6 to 7 inches in circumference30	3.00	20.00
Bulbs 7 to 9 inches in circumference50	5.00	35.00

Narcissus

(TO BLOOM IN LATE FEBRUARY)

	Per Doz.	Per 100
EMPEROR—Yellow trumpet	\$2.75	\$19.00
GLORY OF SASSENHEIM—Bicolor trumpet.....	2.75	20.00
KING ALFRED—Yellow trumpet	3.50	25.00
POETAZ ASPACIA—White, yellow eyes.....	2.00	15.00
POETAZ IRENE—Yellow, orange eyes.....	2.75	20.00
POETICUS ORNATUS (Poet's Daffodil)—White with yellow cup	1.75	12.00
VICTORIA—Bicolor trumpet	2.50	18.00

PAPER WHITE NARCISSUS

To bloom at Christmas—Will bloom in pebbles and water

Select Bulbs, 13-14 centimeters.....	\$1.00	\$7.00
Extra Select Bulbs, 14-15 centimeters.....	1.10	7.50



PAPER WHITE NARCISSUS



NARCISSI BICOLOR VICTORIA

[In Southern regions our Money-Back Bond applies to outdoor planting only.]

Iris Filifolia

[Not Guaranteed in Northern regions except to expert growers and then only for indoor planting.]

A magnificent new strain of bulbous Iris. Wonderfully effective for forcing in a conservatory or in a greenhouse. Equally desirable for garden planting excepting that when planted north of the Mason and Dixon line, the soil must be well drained and the bulbs carefully protected with a heavy mulch.

	Doz.	100	Doz.	100
Celestial. Deep, clear blue; large flower on strong stem	\$1.20	\$8.50		
Imperator. Deep blue; large robust flower; tall, strong stem.	1.50	10.00		
The First. Clear sky-blue; large flower on strong stem. Splendid for early forcing.	3.75	30.00		
Wedgwood. Light blue; large flower on tall, strong stem. The earliest and best forcing variety.			\$3.75	\$30.00
White Excelsior. Pure white; very large flower on strong stem; excellent for forcing..			2.00	15.00
Yellow Queen. Golden yellow; large; the best yellow Iris for forcing.			2.00	15.00

5% Discount for Cash with Order

Not Guaranteed because Lily growing requires more care than the average person will give. Our Money Back Bond does not apply on Lilies. We supply full cultural directions, however. If these directions are followed in detail, satisfactory results can be expected.



LILIUM CANDIDUM (MADONNA LILY)

The Beauty of the Lily ~ Flower of the Ancients

FROM the earliest beginning of garden literature, the Lily has been highly esteemed. It is the most prized of all flowers today. True, there are easier flowers to cultivate; but perhaps we appreciate it the more for that. Unlike the tulip or the narcissus, which anyone can grow, a perfect lily is rarely produced by accident. It is a result of care and skill. It represents a triumph over conditions that most of our neighbors will not take the trouble to under-

stand. Whoever has planted and tended it may indulge a little in the pride of achievement.

Yet lilies are not unduly hard to grow. A little study of their native habits, a little attention to the proper choice of varieties, a little effort to give these the degree of sun and shade, of drainage and of moisture to which they are adapted, and they will reward the gardener with miracles of exquisite bloom.

JAPANESE LILIES

	Each	Doz.	100
Auratum. Gold-banded Lily of Japan. Large and graceful flowers of delicate ivory-white, closely dotted with chocolate-crimson spots; the center striped golden yellow; a truly gorgeous creation; 3 to 4 feet. Flowers in August.			
8 to 9 inches	\$0.35	\$3.50	\$25.00
9 to 11 inches50	5.00	38.00
11 to 13 inches75	7.50	
Auratum Platyphyllum. The choicest of all Auratums. Enormous white flowers richly spotted yellow. Extra selected bulbs	.50	5.50	40.00
Formosum. The Japanese Easter Lily. Excellent for forcing or planting outdoors. Large, white, trumpet-shaped blooms.			
7 to 9 inches30	3.00	20.00
9 to 10 inches40	4.00	30.00

	Each	Doz.	100
Longiflorum. Pure white, trumpet-shaped flowers, similar to the Bermuda Easter Lily. Excellent for cutting. June and July.			
6 to 8 inches	\$0.30	\$3.00	\$20.00
7 to 9 inches40	4.00	30.00
Speciosum Album. Large, pure white blooms; extremely attractive.			
7 to 9 inches60	6.00	48.00
Speciosum Melpomene. White blooms heavily spotted and overlaid with crimson.			
7 to 9 inches40	4.00	30.00
9 to 11 inches60	6.00	47.00
Speciosum Rubrum, or Roseum. Almost like Lilium Speciosum Melpomene.			
7 to 9 inches40	4.00	30.00
9 to 11 inches60	6.00	47.00
11 to 13 inches75	7.50	57.50

5% Discount for Cash with Order

Because of transportation difficulties, Japanese Lilies frequently do not arrive in time for Fall planting, in which event we carefully pack them in sand and store them until Spring, when they are distributed.

European Grown Lilies

Brownii. Massive, deliciously fragrant flowers which open pale yellow fading to a creamy-white. The outside of the trumpet is streaked with reddish-brown. Grows 3 to 4 feet tall and blooms in July. The favorite lily of our President who considers it the most exquisitely beautiful lily in cultivation..... \$3.50

CANDIDUM: The Ancient Easter Lily. The beautiful and historic Easter Lily needs no introduction here, for, although the horticulturists call it *Lilium Candidum*, it is known all over the world as the Annunciation or Madonna Lily. Notwithstanding its rich beauty, many flower lovers deny themselves this fragrant Lily because of the incorrect belief that it must be planted early in September. At our own Nursery we have planted as many as 10,000 in November to get beautiful blooms the following June, when we sold them to wholesale cut-flower buyers for double the price of the original bulbs! Elliott's *Candidum* bulbs are really the finest that come to America, being grown only in the north of France.

Selected bulbs35 \$3.50 \$25.00
 Extra large selected bulbs..... .45 4.50 35.00

TESTACEUM (Excelsum) NANKEEN LILY

Lilium Testaceum. Resembles more nearly than any other lily a yellow *Lilium Candidum*. In favorable situations it will grow from 6 to 7 feet tall and it is the most graceful of all the lilies and its yellow color is exquisite beyond description. The bulbs are very scarce and orders for *Lilium Testaceum* will be filled in rotation as received and we cannot guarantee to fill late orders. Extra select bulbs..... \$2.50

NATIVE and AMERICAN-GROWN LILIES

	Each	Doz.	100
Batemanii. A vigorous, sturdy lily growing from 3 to 4 feet, bearing from 5 to 10 splendid reddish-orange flowers in July and August.	\$0.40	\$4.00	\$30.00
Canadense Flavum. The beautiful native Lily, with graceful, charming, yellow flowers.	2.50	18.00	
Canadense Rubrum. Similar in all respects to the preceding variety, save that the flowers are red....	3.00	20.00	
Canadense, Mixed. Flowers of various shades of yellow, orange and red, spotted with black and brown. Excellent for mass plantings or shrubbery borders, first size bulbs.	2.50	18.00	
Elegans, Leonard Joerg. Rich apricot blooms, attractively spotted and dotted.	3.50	25.00	



LILIUM AURATUM



LILIUM CANADENSE RUBRUM



LILIUM ELEGANS

Carriage Prepaid on Every Bulb Order in the United States

	Each	Doz.	100
Elegans. Mixed colors. An attractive variety of colors suitable for a group planting. Extra selected.		\$3.00	\$20.00
Hansonii. Bright orange flowers spotted with brownish purple. Occasionally the bulbs remain dormant the first year after planting, but they will come up vigorously the following season.	\$1.00	11.00	
Henry. The flowers are dark reddish yellow, marked with small brown spots.	1.00	11.00	
Philadelphicum. The plant usually bears two to five upright flowers which are pale yellow, spotted maroon and tipped with bright scarlet, first sized bulbs.		2.50	18.00
Tigrinum Splendens. Well-known single Tiger Lily. Attractive reddish orange blooms spotted with black, extra large bulbs.35	3.50	25.00
Tigrinum Splendens fl. pl. Double Tiger Lily orange red blooms spotted with black. Extra large bulbs.35	3.50	25.00

LILIAM HARRISII (True Bermuda Easter Lily)

These Lilies are suitable for growing in greenhouse only.

Bulbs 6 to 7 inches in circumference30	3.00	20.00
Bulbs 7 to 9 inches in circumference50	5.00	35.00

LILY-OF-THE-VALLEY

	Per 25	Per 100	1000
American Pips. Ready in October. For outdoor planting only. 2 year old pips	1.25	3.75	35.00
Extra Selected Berlin Pips. Ready in December. For forcing (American pips will not force)	2.00	7.50	70.00
Large Clumps. American grown. Ready in December. \$0.50 each \$5.00 per dozen			

LILIAM REGALE

A Lily for Forcing or Outside Planting

The center of the flower is flushed with yellow, shading to white at the outer edges. Externally the flowers are streaked with brown shaded through the almost translucent petals with a delightful pearly tint. A truly royal lily and most extraordinarily beautiful. It has the merit of being hardy and as easy to grow as a carrot. It will grow anywhere, under almost any conditions and with no attention whatever. Its height is 4 to 5 feet and blooms in July. Because of its great beauty and exceedingly easy culture it is the most popular of all the lilies and the lily most widely planted. It may also be forced.

Selected Bulbs	\$0.50	\$5.00	\$38.00
Extra Selected Bulbs75	7.50	57.00

SUPERBUM—The Lily that Defies Neglect!

Superbum is unquestionably one of the most satisfactory and unusual lilies. It can be planted in the garden or the meadows; in wet swamps or dry ground; on the edge of the woods or in cultivated ground. It will thrive wherever you put it—and it will grow without care or attention! On top of all this it is truly a superb lily, as its name suggests; it often grows over eight feet high, producing 20 to 30 orange-red flowers in the one month when flowers are apt to be scarce—July. By virtue of our yearly contract to have 25,000 of these grand Lilies grown especially for us, we are able to offer them at a price low enough to make it available for naturalizing in quantities.

Extra Selected Bulbs	3.00	20.00
250 for \$45.00; 500 for \$80.00;		
1000 for \$150.00.		



LILY-OF-THE-VALLEY



LILIAM REGALE



LILIAM SUPERBUM

Carriage Prepaid on Every Bulb Order in the United States



Spring's First Flower ~ The Crocus

(FLOWERS IN MARCH)

BETWEEN the melting of Winter's last snow and the blooming of Spring's first tulip, a flat and barren landscape is an ordeal for sensitive people to endure. And it is quite unnecessary when Crocuses are available to fill in the void. It would seem almost foolish to deprive oneself of the joy that Crocuses bring. Even if one were indifferent on one's own account, isn't it selfish to refuse to add beauty to the world when beauty may be had at so little cost?

Crocuses, the earliest of all spring flowering bulbs, are also the cheapest; and there is nothing else to take their place. If the foliage is not cut off they will last indefinitely. They should be used for edging tulip beds or any garden bed or shrub border. Scattered through the lawn, they will gleam like jewels against the verdant background.

For the hand made mixture see page 2. For best effects allow seven to nine bulbs for each squarefoot to be planted.

CROCUSES

Fine Named Varieties

	Doz.	100
Albion. Striped white and blue	\$0.70	\$5.00
Baron Von Brunow. Dark blue70	5.00
Caroline Chisholm. Pure white75	5.50
Cloth of Silver. White; violet striped70	5.00
Grand Lilac. Lilac; very early and very fine.	.90	6.50
Harbinger of Spring. Brilliant dark purple;		
very early70	5.00
Julia Culp. A beautiful new late purple-blue		
crocus70	5.00
Kathleen Parlow. Pure white; extra large		
flower90	6.50
King of the Blues. Dark purple70	5.00
King of the Whites. Large; snow-white;		
splendid new variety75	5.50
Masterpiece. The new light violet-blue crocus.	1.00	7.00
May. The finest pure white crocus75	5.50
Mont Blanc. White; best80	5.75
Mad. Mina. Light blue, striped; very early;		
extra fine70	5.00
Non Plus Ultra. Blue, white border75	5.50
Othello. Dark purple.70	5.00

	Doz.	100
Pallas. White, striped light blue	\$0.70	\$5.00
Queen of the Blues. The finest porcelain		
blue crocus90	6.50
Remembrance. The finest purplish-blue crocus	1.10	7.50
Scotch. White, striped; very early60	4.50
Striped Beauty. The finest striped crocus ..	.90	6.50
Sir Walter Scott. Striped; finest70	5.00
Sir John Franklin. Large; dark purple70	5.00
Xerxes. Lilac, extra large65	4.50
All colors mixed. \$32.50 per 100060	4.00

YELLOW CROCUS

Large Yellow. Second size usually sold as		
Mammoth70	5.00
Large Yellow. Mammoth bulbs; first size ..	.75	5.50
Large Yellow. Monster bulbs90	6.50

CROCUSES IN SEPARATE COLORS

	Doz.	100	1000
Last year we supplied our customers			
with nearly a quarter of a million			
crocus in separate colors and mixtures			
Blue	\$0.60	\$4.00	\$35.00
Striped60	4.00	35.00
White60	4.00	35.00
All Colors Mixed60	4.00	35.00

Carriage Paid on Every Bulb Order in the United States



Prices Cut on Quality Peonies

PLANT peonies. They are gloriously magnificent, ruggedly healthy, and their size and beauty increase year after year. They will live almost as long as a house will last. They are very easy to grow; no expert knowledge is needed and only a minimum of care

is required for their cultivation. Scientific Horticulturists will testify that the named plants here offered rank with the finest specimens. Take advantage of this sale; send your order NOW, today. You will be both glad and proud to have your garden beautified by these magnificent flowers.

Three Distinguished Peony Plants

Regular Price \$3.30—Sale Price \$2.75

ORDER NOW—PAY NEXT FALL

- FESTIVA MAXIMA**—Huge double flower, pure white, flecked with crimson in the center. One of the World's Finest Peonies. Blooms in midseason.
- KARL ROSENFELD**—Authorities consider this the finest clear red peony. A steady, reliable bloomer, a remarkably sturdy, fine growing plant. Blooms in midseason.
- PRESIDENT TAFT**—(Reine Hortense) Beautiful rose-pink, double flowers of remarkable size and unusual beauty. Ranks with the finest and best of Pink Peonies. Blooms in midseason.

3 each, 9 in all (Regular Price \$9.95) — Sale Price \$8.25
6 each, 18 in all (Regular Price \$16.25) — Sale Price \$14.50

All for Fall Delivery, Postpaid

Three Standard Peony Plants

Regular Price \$1.50—Sale Price \$1.20

ORDER NOW—PAY NEXT FALL

HERE is your chance to get three excellent Peony Plants at a real bargain price. Here is your opportunity to get better than average peonies at a price much lower than you would have to pay for nondescript specimens. Every plant is a named variety of good reputation. We cannot specify the varieties here, but when you receive your plants, each will be properly named, and the more you know your peonies, the greater will be your satisfaction.

3 each, 9 in all (Regular Price \$4.50) — Sale Price \$3.50
6 each, 18 in all (Regular Price \$7.50) — Sale Price \$6.75

All for Fall Delivery, Postpaid

For several reasons, but mainly because plants will not thrive under neglect, our Money-Back Guarantee does not apply on these offers. We do promise that every Elliott Plant is true to name and is strong and healthy.

Full Cultural Directions with Every Order

The Magnificent Amaryllis

A STRANGE AND BEAUTIFUL FLOWER

*For Indoor Winter Growing
Blooms in January*

WHEN Nature sleeps, when the ground is as hard as steel, and when every landscape is bleak and barren, the Gorgeous Amaryllis will fill your home with luxuriant tropical beauty.

Picture having flowers like this to help dispel the cheerlessness of winter . . . large, lily-like blooms . . . beautifully formed and colored . . . a color range of reds . . . rose . . . crimson . . . scarlet . . . cherry . . . and maroon.

Each plant will average four big flowers, measuring from 6 to 8 inches in diameter. Occasionally one bulb will produce two stems, with blooms, and occasionally a stem will have five or six flowers.

Astounding Vigor Amazingly Easy to Grow

In some respects the Amaryllis is a miracle bulb. It is hardly an exaggeration to say that it cannot fail. Lay a bulb anywhere in a warm room; it will flower. It is best, though, to plant in pots. If you have hesitated about growing flowers indoors because of the doubts and fears of inexperience, the Amaryllis is just for you.

No skill is required, nor will it give you any trouble. All you need do is watch the magic of its growth and beauty.

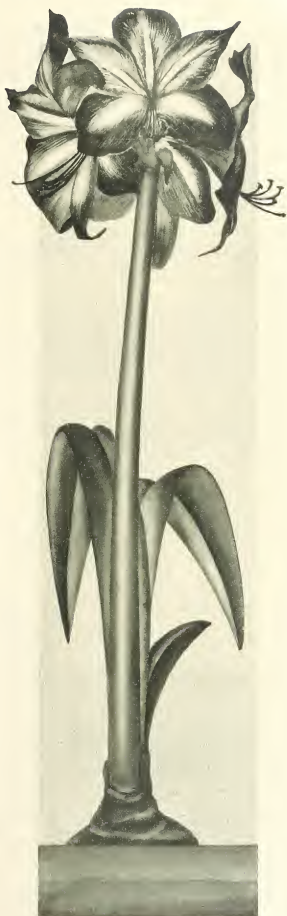
The Amaryllis is a semi-rare bulb. Heretofore, its price has been too high for it to become generally known. We are happy to announce that we are now able to offer these bulbs at a price so low as to attract thousands of flower lovers. Do not deny yourself the pleasure of having these strange and beautiful flowers. Send your order Now, today.

The Elliott Money-Back Bond
Protects you on This Offer

Each
75c

12 Bulbs
\$7.50

100 Bulbs
\$60.00



ELLIOTT NURSERY CO.
505 Magee Building + Pittsburgh, Pa.

Carriage Prepaid on Every Bulb Order in the United States

The Elliott GUARANTEE and MONEY BACK BOND

EVERY bulb in this catalog is guaranteed to be first class in every respect, and absolutely true to name. And, except in a very few instances, every bulb we ship is sold with a Money Back Bond. This means that if you are in any way dissatisfied with results, you have

only to tell us; we will refund every cent you have paid. The bulbs will not have cost you a penny. There are no strings to this Bond; it is Exactly as Stated. In no case, though, shall we be liable for more than the purchase price of the bulbs.

TERMS of PAYMENT, Etc.

Please read before ordering

HYACINTHS, Tulips, Crocuses, etc. The prices quoted in this list on all Dutch Bulbs, Bermuda Lilies and other bulbs are for advance orders, which must reach us not later than July 1, 1930. To make these very low prices, we must have our orders in advance, as we cannot take any risk of having stock unsold on our hands. The bulbs will be delivered upon arrival, and need not be paid for until after delivery. Prices quoted include duty and all charges, including freight, expressage, or postage, from Pittsburgh.

Time of Delivery Bermuda Lilies arrive in August, Roman Hyacinths, Freesias, Candydium Lilies and Paper-White Narcissus in September; Dutch Bulbs, Hyacinths, Tulips, etc., in October. In ordering please state whether you wish your bulbs shipped as they arrive or all in one shipment. In absence of instructions, we will send all bulbs in one shipment, except Japanese Lilies and Lily-of-the-Valley, which will be shipped upon arrival, in November, December, or the following Spring. Transportation conditions are still so unsettled that we cannot guarantee time of delivery, but in the event of late delivery, northern orders will be shipped first, and extreme southern ones last.

Shipping Instructions Please send full shipping instructions. State whether goods are to be shipped by express or parcel post, and by what route. In the absence of instructions, we will ship by whatever method and route we think best. Please print your name and address on your order. Many times it is exceedingly difficult to read these two important points of an order, and a shipment may go astray.

5% OFF FOR CASH before July 1st 1930

Our terms of payment are invariably cash on delivery, which does not mean that we will ship anything offered in this catalog C.O.D., as we will not do so under any circumstances. We deliver the goods and mail bills at the same time, and expect payment within a few days. People unknown to us will please send references with their orders. Those who wish to send cash in advance with their orders will be allowed a discount of five per cent. from the prices quoted on this list on all orders made up from this catalog, received before July 1, 1930.

Terms of Payment The earlier orders are given, the better we can have them filled. Some of our customers are now giving us orders to be delivered next Spring. Our representative usually sails for Europe early in June and personally selects the stock for all import orders received by July 1st.

Early Orders Six plants of a kind will be furnished at the dozen rate; fifty or more at the hundred rate, and five hundred or more at the thousand rate. Less than six plants of one kind or variety will be sold only at the single rate.

Prices No request for cancellation can be granted after July 10th, when the final orders are sent to Holland. Import orders taken subject to the failure of the crop.

Cancellations With each shipment of bulbs we send printed cultural directions, giving full instructions for growing in the house as well as outdoors.

Cultural Directions Bulbs and plants can now be sent by parcel post, and when it is advantageous we always do so.

ELLIOTT NURSERY CO., 505 Magee Bldg., Pittsburgh, Pa.

Glorify Your Garden with Lovely DELPHINIUM

(Perennial Larkspur)

Knee high!

Head high!

Ladder high!

Stately—

Exquisite—

Wonderful!

Perennial Larkspur

Most beautiful of plants

For
September
and
October
Delivery

BLOOMING all summer, coming up year after year, sending aloft successive shafts of incredible color to a height of five, six, eight feet—it is doubtful if any other plant so superb as Delphinium ever graced a garden.

Few people are aware of the perfection to which this ancient flower has been brought by modern culture, how easily it can be planted and grown, and how lasting a delight the gardener secures who plants Delphinium. If everyone knew, tall, hardy Delphinium would be more in evidence everywhere.

* * *

We offer specially selected plants grown from seeds of famous named varieties for autumn planting. Will grow anywhere but do best in rich garden soil. Every imaginable tint and shade of blue, lavender, and purple. We promise you'll find positive joy in their extraordinary bloom. Directions—few and simple—with each shipment.

Elliott's Magnificent Varieties

Improved English Hybrids—Range in color from very light blue to very dark blue, overlaid irregularly with tones of pink and lavender, rose, and lilac. Black spots on pistil and anthers at center of flower. Many blossoms show white secondary petals of white spots at bases of major petals. A wonderful wealth of color variation in the English Hybrids.

Fine Mixed English Hybrids—Dozen Strong Plants \$2.50, Fifty Strong Plants \$7.50, One Hundred Strong Plants \$15.00. Extra-Selected Varieties, each .50 cents. \$5.00 per dozen.

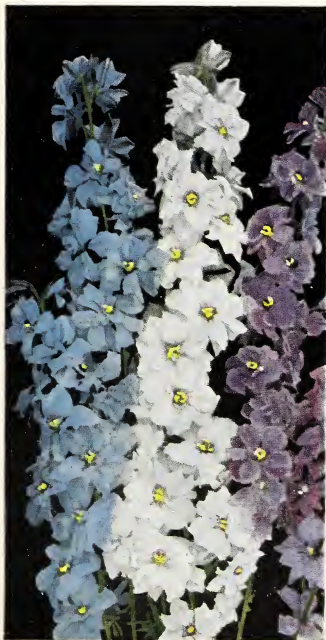
Belladonna—Uniform light sky-blue. The most universally admired and desired of the solid-color varieties.

\$2.50 per dozen, \$7.50 per 50, \$15.00 per 100

Bellamosa—(The improved Formosum)—For solid dark blue color, unequalled among Delphiniums—positively the best.

\$2.50 per dozen, \$7.50 per 50, \$15.00 per 100

*"And larkspurs, many hued, shall drive
Gloom from the groves!"*





**8 flowers
from 1 bulb**

Blooms Indoors from January to Spring

A Prize to the Prompt

Order Now ~ Pay Next Fall

SOLD WITH A MONEY BACK BOND

ONLY twice in 10 years have we been able to get a supply of these rare Hyacinth Multifloris (many flowers) Bulbs. This time we have the entire world's supply, which is only 10,000 bulbs. Instead of charging a high price for these rare and exclusive creators of remarkable beauty, we offer them at the very low price of 50 cents each. Can you imagine a bigger fifty cents' worth anywhere? *One bulb will produce from 6 to 10 separate trusses; each truss will produce a big cluster of beautiful, fragrant flowers.* This fragrance and beauty come when you need it the most, when you want it the most; from January on, and right inside the house.

*To make the distribution as fair as possible,
we will sell no more than 12 bulbs to a person.*

50 cents for One Bulb \$1. for Three Bulbs
Your choice of three colors; Pink, White and Blue.

*There are only 10,000
of these bulbs in the
world; and we have
them all. So, you must be
Prompt ~ play safe ~
Order Now, Today.*

RARE . . . EXCLUSIVE . . .
BEAUTIFUL . FRAGRANT



*Your choice of 3 colors:
Pink, White, and Blue*



JUST 10,000 BULBS
IN EXISTENCE



*We have the Entire
World's Supply*



FIRST COME,
FIRST SERVED



Play Safe ~ Order Today



YOUR MONEY BACK
IF THEY DON'T GROW

ELLIOTT NURSERY CO., 505 Magee Bldg., Pittsburgh, Pa.